



Lebanon National Operations Room Daily Report on COVID-19

Saturday, November 07, 2020

Report #234

Time Published: 10:30 PM

New in the report:

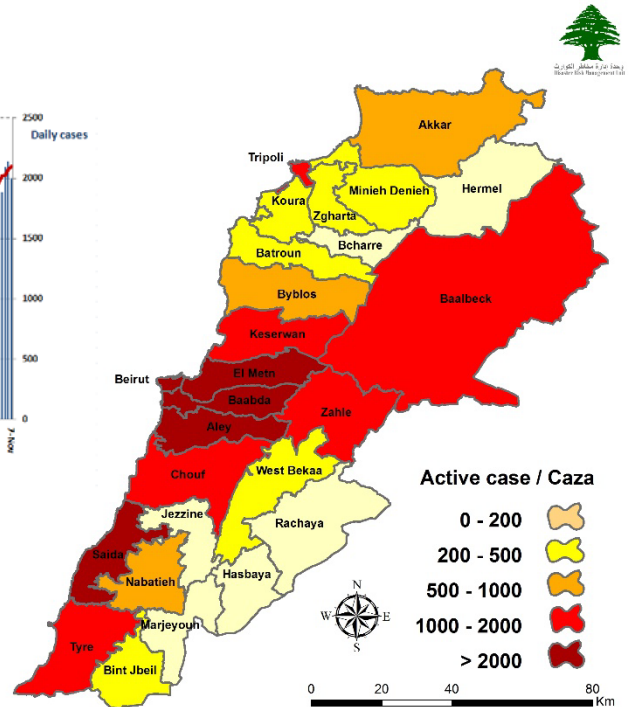
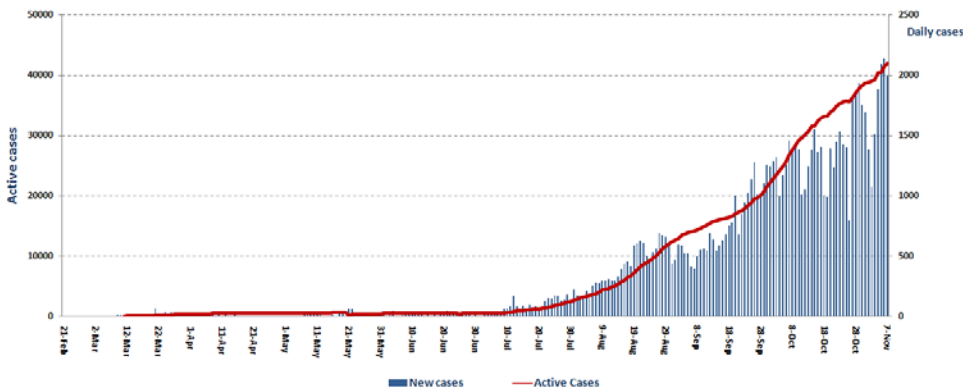
-The names of the laboratories that did not specify the district, place of residence, or phone number for a number of positive cases, which affects the tracking of cases and the identification of contacts to conduct the necessary checks within the past 24 hours.

1,769 New Cases		93,097 Total Cases since 21.2.2020		713 Total Deaths		50,384 Total Recovered	
1,765 Residents	4 Expats	90,631 Residents	2,466 Expats	13 New Deaths		1,389 New Recovered	
268 Deleted Status due to its recurrence		1,489 Total Cases in the Health Sector		42,000 Total Active Cases		782 Hospitalized Cases	
15,1% Positivity rate		12 Cases in the Health Sector		41,218 Cases in Home Isolation		128 Ventilated Cases	279 Total cases in ICU
1,261,503 COVID-19 Tests since 21.2.2020		Lebanon Status compared to the World					
953 COVID-19 Tests at Airport within 24 hrs.		11,724 COVID-19 tests for residents within 24 hrs.		Total Cumulative	93,097	49,991,929	
				Total Deaths	713	1,253,443	
				Deaths percentage	0,76%	2.5%	
				Total recoveries	50,384	35,437,072	

Ref: Ministry of Public Health Data

Number of Cases by Location

- 16,344 case is Under investigation



Beirut	122
Ain El Mraisseh	10
Aub	1
Ras Beyrouth	4
Manara	1
Qreitem	1
Raoucheh	1
Hamra	3
Ain Et Tineh	1
Msaitbeh	4
Ouata El Msaitbeh	1
Mar Elias	5
Unesco	1
Tallet El Khayat	1
Zarif	1
Mina El Hosn	3
Mazraa	3
Borj Abou Haidar	3
Tariq Ej Jdideh	11
Horch	1
Ras En Nabaa	4
Basta Et Tahta	6
Gemmaizeh	2
Geitawi	4
Rmeil	6
Achrafiyeh	5
Aadlyeh	2
Others	37
Chouf	66
Damour	1
Naameh	5
Mechref	1
Chhim	5
Mazboud	1
Daraiya	1
Ketermaya	1
Barja	13
Baassir	1
Jadra	2
Aalmane	1
Rmeileh	2
Ouardaniyeh	4
Zaarouriyeh	2
Bsaba	1
Kfar Faqoud	1
Brih	3
Ain Zhalta	2
Baaqline	1
Jahliyah	1
Jdaideh	1
Beqaata	2
Niha	2
Aammatour	3
Mazraa	1
Barouk	1
Others	7

Baabda	248
Chiyah	18
Jnah	8
Ouzaai	2
Bir Hassan	9
Ghbayreh	10
Ain Roummaneh	7
Furn Ech Chebbak	2
Haret Hreik	41
Laylakeh	9
Borj El Brajneeh	34
Mreijeh	13
Tahouitat Ghadir	5
Baabda	8
Hazmiyeh	9
Fayadiyeh	2
Hadath	34
Boutchay	3
Louayzeh	1
Jamhour	1
Kfar Chima	2
Ouadi Chahrour	1
Haret Es Sitt	1
Bsaba	2
Ras El Matn	1
Qsaibeh	1
Salima	2
Rouayssat Salima	2
Qalaa	1
Chbaniyeh	1
Btekhmay	2
Falougha	1
Qornayel	3
Others	12
Aleyh	109
El Aamroussiyyeh	5
Hay Es Sellom	29
El Qoubbeh	1
Khaldeh	4
El Oumara	18
Deir Qoubel	1
Aaramoun	13
Bchamoun	11
Bsous	1
Aaley	6
Qmatiyeh	1
Aayat	1
Souq El Gharb	1
Bayssour	5
Majdel Baana	1
Saoufar	1
Bedghane	1
Mechqaiti	1
Charoun	1
Aazzouniyeh	2
Ain Dara	1
Others	4

Kesrwen	60
Jounieh Sarba	5
Jounieh Kaslik	2
Zouk M Kayel	5
Nahr El Kalb	1
Jounieh Ghadir	1
Zouk Mosbeh	8
Adonis	5
Sahel Aalma	2
Kfar Yassine	1
Adma Oua Dafneh	5
Bouar	2
Aajaltoun	6
Ballouneh	2
Shayleh	1
Ain Er Rihaneh	1
Jaaita	1
Ghazir	1
Kfour	2
Ghineh	2
Zaaitreh	1
Zaitoun	1
Aachqout	3
Raachine	2
Jbeil	24
Jbeil	7
Blat	4
Eddeh	1
Aamchit	3
Halate	1
Jedayel	1
Nahr Ibrahim	2
Aalmaat	1
Chamate	1
Hsarat	1
Gharzouz	1
Others	1
Zgharta	21
Zgharta	9
Rachaaine	1
MEjdlaiya	5
Iaal	1
Bsebaal	1
Miziara	1
Miriata	1
Others	2
Batroun	12
Kfar Aabida	1
Chikka	4
Bijdarfil	3
Bcheaali	3
Others	1
Hasbaya	1
Kfar Hamam	1
Bcharrieh	2
Hadath Ej Joubbeh	1
Others	1

Matn	173
Borj Hammoud	10
Nabaa	1
Sinn El Fil	11
Horch Tabet	1
Jdaidet El Matn	5
Baouchriyeh	4
Daoura	2
Raouda	4
Sabtiyeh	4
Dekouaneh	11
Tall Ez Zaatar	1
Mkalles	2
Antelias	6
Jall Ed Dib	9
Naqqach	3
Naqqach Ej Jdideh	2
Zalqa	13
Byaqout	3
Dbayeh	4
Deir Aaoukar	5
Mansouriyeh	8
Fanar	3
Ain Saadeh	3
Ain Najm	1
Roumieh	7
Bsalim	2
Nabay	1
Mtayleb	1
Rabiyeh	6
Qornet Chehouane	1
Elissar	2
Raboueh	2
Beit Ech Chaar	1
Dik El Mehdi	7
Ain Aar	2
Mazraat Yachouaa	5
Bikfaya	1
Beit Chabab	1
Ain Aalaq	1
Aatchaneh	1
Fraykeh	1
Broummana	3
Beit Meri	2
Monteverdi	1
Aintoura	1
Aafs	2
Chouaya	1
Baskinta	1
Beqaata En Nahr	1
Others	3
Hermel	4
Hermel	1
Others	3
Rachaiya	3
Rachaiya El Ouadi	1
Others	2

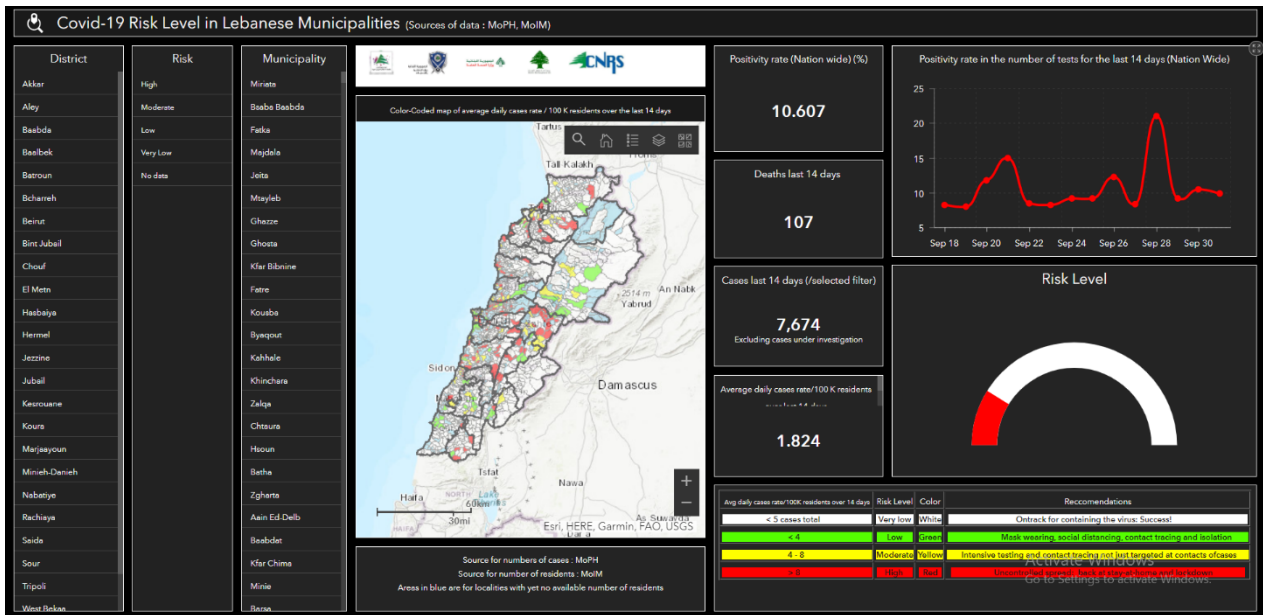
Tripoli	74
Trablous Ez Zeitoun	4
Trablous Haddadine	6
Trablous Bab Raml	1
Trablous Et Tall	1
Trablous El Qoubbeh	10
Trablous Tabbaneh	2
Mina N:1	9
Mina Jardins	1
Qalamoun	5
Beddaoui	6
Ouadi En Nahleh	1
Camp Beddaoui	2
Others	26
Koura	33
Amioun	1
Kfar Aaqqa	1
Kfar Saroun	1
Bterram	2
Bsarma	1
Ain Aakrine	2
Kousba	1
Rechdibbine	3
Fiaa	1
Deddeh	3
Enfeh	5
Ras Masqa	1
Bohsas	1
Dahr El Ain	7
Zgharta El Mtaouileh	1
Others	2
Beqaa Gharby	38
Jalala	1
Machghara	18
Khirbet Qanafar	1
Lala	2
Kamed El Laouz	1
Khiara	1
Qaraaoun	3
Haouch El Harimeh	1
Saouiri	2
Sohmor	2
Libbaya	1
Yohmor	1
Others	4
Marjaayoun	10
Aadaysseh	2
Kfar Kila	2
Taybeh	1
Houla	1
Qabrikha	3
Majdel Selm	1
Bnt Jbeil (2)	4
Hariss	1
Qalaouiyeh	2
Debl	1

Zahleh	85
Zahleh El Midane	2
Zahleh Er Rassiyeh	1
Zahleh Maallaqa	1
Karak Nouh	2
Saydet En Najat	1
Haouch El Oumara	6
Zahleh Aradi	2
Tall Chiha	1
Zahleh Mar Elias	1
Nabi Ayla	2
Hazerta	3
Ablah	2
Ksara	1
Chtaura	5
Jalala	1
Makseh	1
Taalabaya	5
Saadnayel	4
Qabb Elias	2
Mrayjat	1
Barr Elias	2
Aanjar	5
Kaboussiyeh	1
Majdel Aanjar	3
Riyag	6
Aali En Nahri	5
Terbol	3
Massa	1
Ain Kfar Zabad	4
Kfar Zabad	1
Others	10
Saida	67
Saida El Qadimeh	18
Hlaliyeh	5
Miyeh Ou Miyeh	2
Ain El Heloueh	8
Majdelyoun	2
Aabra	3
Ghaziyeh	1
Maghdoucheh	3
Zeita	1
Kharayeb	2
Zrariyeh	1
Ghassaniyeh	1
Sarafand	2
Saksakiyeh	1
Aarab Tabbaya	1
Kfar Hatta	2
Others	14
Bnt Jbeil	16
Bent Jbayl	1
Aaynata	4
Rmaych	5
Safad El Battikh	1
Haddatha	1

Akkar	44
Halba	4
Aarqa	1
Bqerzla	1
Deir Dalloum	1
Borj El Aarab	1
Tikrit	1
Aakkar El Aatiqa	1
Koucha	1
Massaaoudiyeh	1
Qleiaat	1
Janine	1
Bebnine	1
Nahr El Bared	2
Aabdeh	2
Qarqaf	1
Jdaidet El Qayteaa	1
Michmich	2
Fnaydeq	5
Majdala	1
Rahbeh	1
Bireh	1
Qbaiyat	2
Akroum	1
Others	10
Mineh Daneih	15
Deir Aammam	1
Minieh	6
Sir Ed Danniyyeh	2
Aassoun	1
Beit El Faqs	1
Kfar Habou	1
Bakhaaoun	3
Tyre	48
Sour	14
Sour El Bass	4
Sour Er Rachidiyeh	1
Borj Ech Chemali	6
Deir Qanoun El Ain	1
Maalliyeh	1
Ouadi Jilo	2
Qana	1
Maarakeh	1
Maaroub	3
Bazouriyeh	1
Deir Kifa	2
Tayr Falsay	1
Bedias	1
Aabbassiyeh	4
Borj Rahhal	1
Qasmiyeh	1
Jibbain	1
Henniyeh	1
Others	1

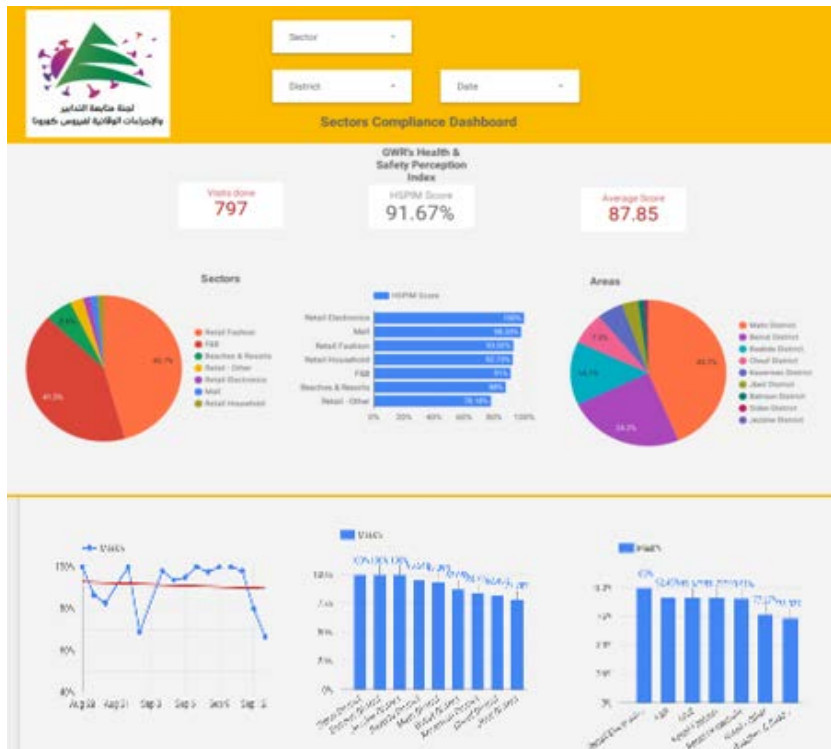
Baalbek	158
Baalbek	40
Ras El Ain	1
Douris	4
Tall Safiyeh	1
Nahleh	7
Ras Baalbek Sahel	1
Ain	6
Nabi Osmane	2
Laboueh	1
Younine	1
Deir El Ahmar	3
Bessailet Et Tahta	1
Mchaitiyeh	1
Aaynata	1
Bednayel	3
Qsarnaba	5
Temnine El Faouqa	4
Beit Chama	1
Haouch Er Rafqa	1
Temnine Et Tahta	6
Chmistar	2
Haouch En Nabi	1
Taraya	1
Serraaine Et Tahta	4
Serraaine Faouqa	3
Nabi Chit	5
Haour Taala	1
Brital	2
Khreibeh	1
Bouday	1
Chlifa	24
Mazraat Es Sayed	1
Others	22
Nabateih	38
Nabatiyeh Et Tahta	4
Mazraat Kfar Jaouz	2
Zibdine	4
Choukine	1
Habbouch	3
Aarab Salim	1
Houmine Et Tahta	1
Zefta	2
Toul	1
Harouf	1
Douair	3
Aadchit Ech Chqif	1
Insar	3
Zaoutar Charqiyeh	1
Braiqeaa	1
Kfar Sir	1
Others	8

The Online platform to measure the level of risk of the spread of the new Corona virus



This interactive platform allows you to know the level of risk of spreading the kurna virus according to districts, based on the number of cases registered daily and the number of residents in each district. For more information daily, you can access the following link: <https://bit.ly/DRM-RiskLevelInMunicipalities>

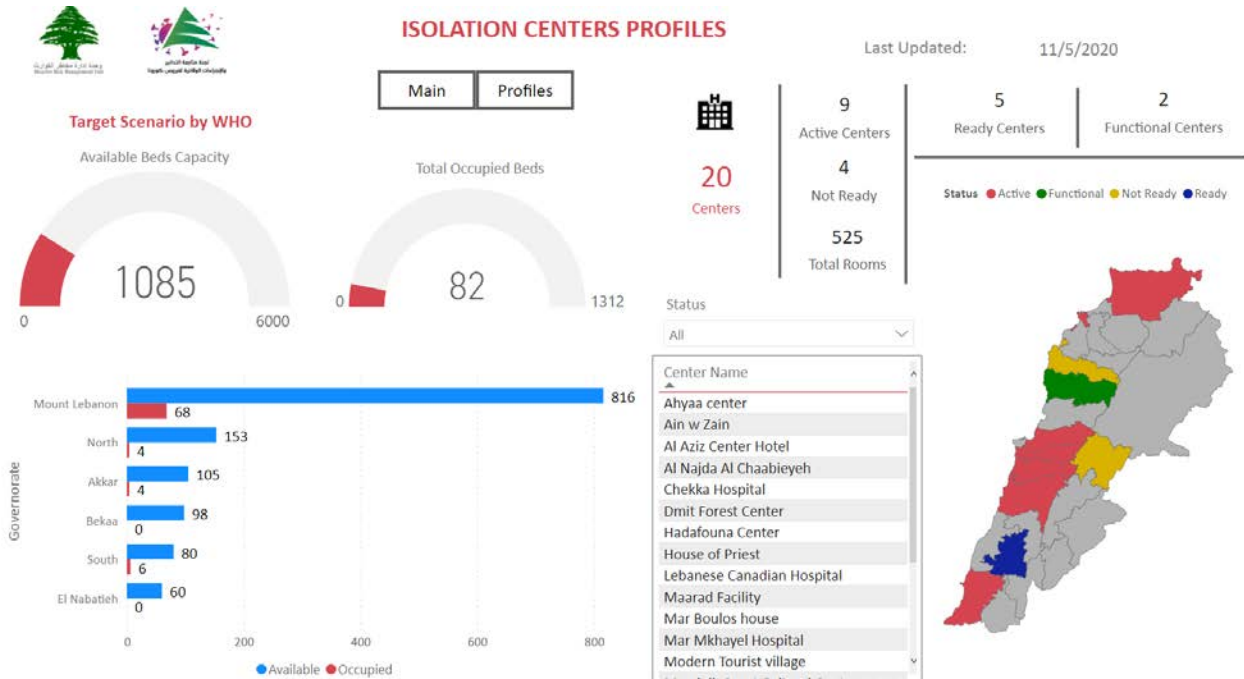
Online platform to track sector commitment in general mobilization procedures



Based on the recommendation issued by the National Committee for Follow-up of Preventive Measures and Measures to Confront the Coronavirus to open all sectors, provided that the general mobilization procedure (safe distance, muzzle, and hand sterilization) be applied, a special electronic platform was created that allows monitoring and measuring the percentage of commitment by various sectors on an ongoing basis.

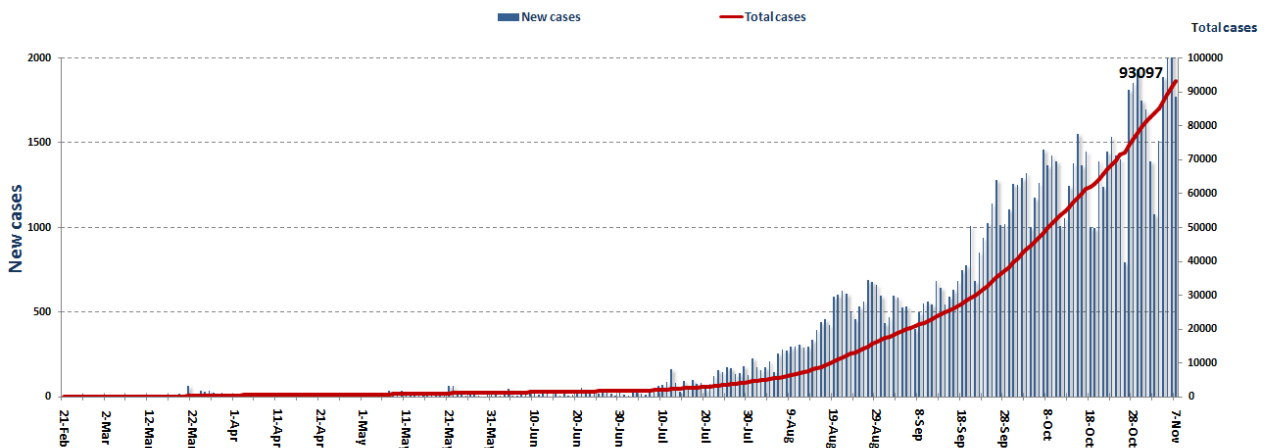
The detailed results can be viewed directly at the following link <http://bit.ly/covidsectordata>

Occupancy rate of isolation centers for cases infected with Coronavirus

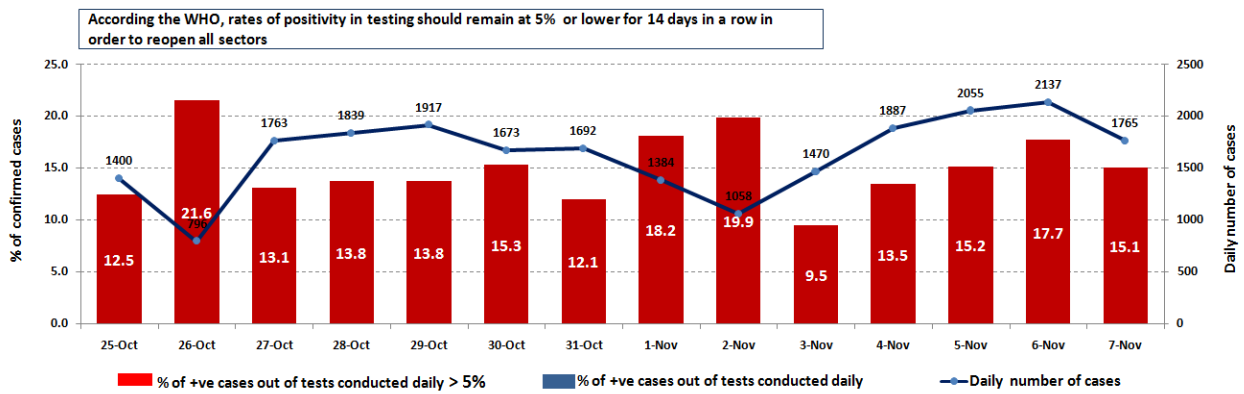


For more information about the isolation centers' distribution and the percentage of their occupancy, enter the following link: <http://bit.ly/DRM-IsolationCentersProfiles>

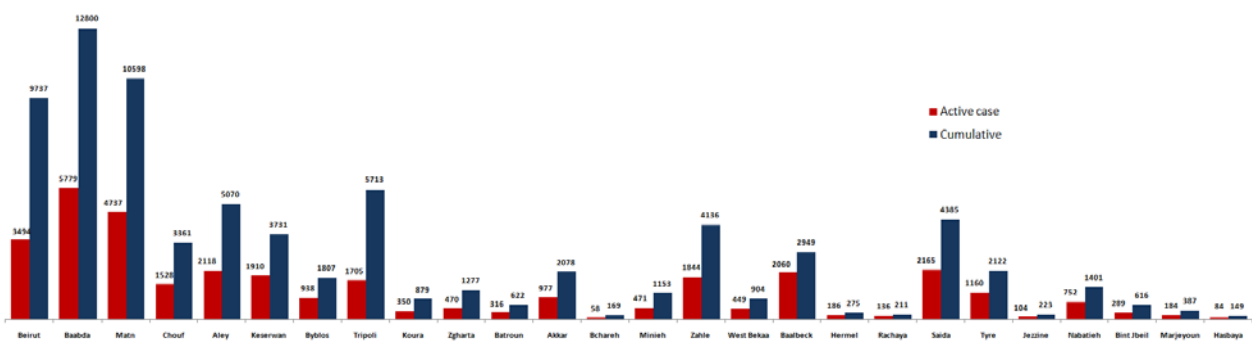
Cases per day



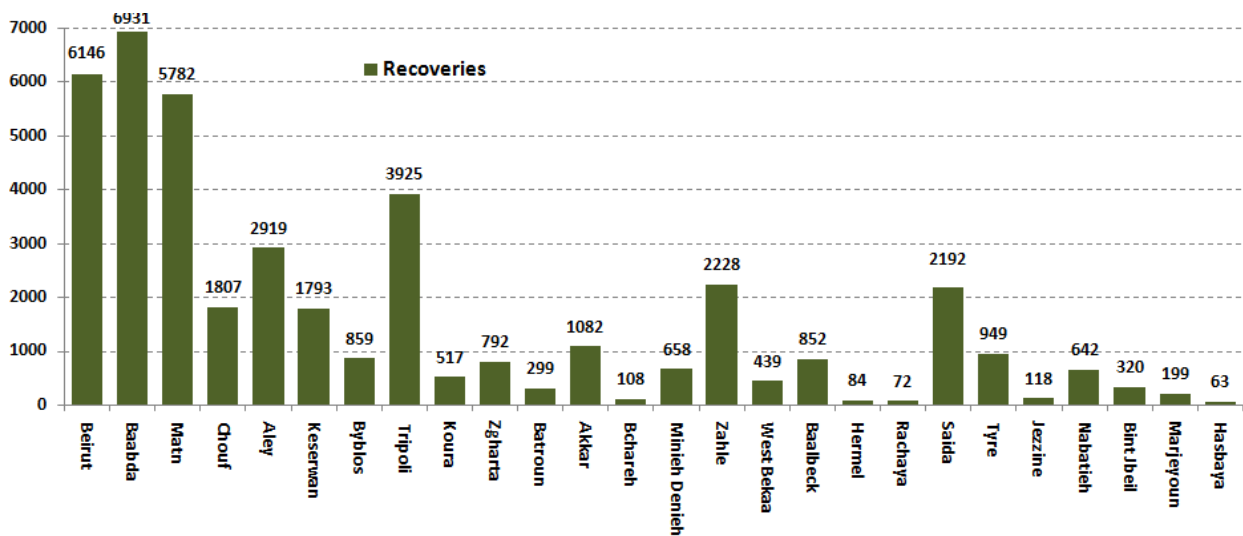
The percentage of positive cases out of the number of daily checks (25 Oct - 07 Nov 2020)



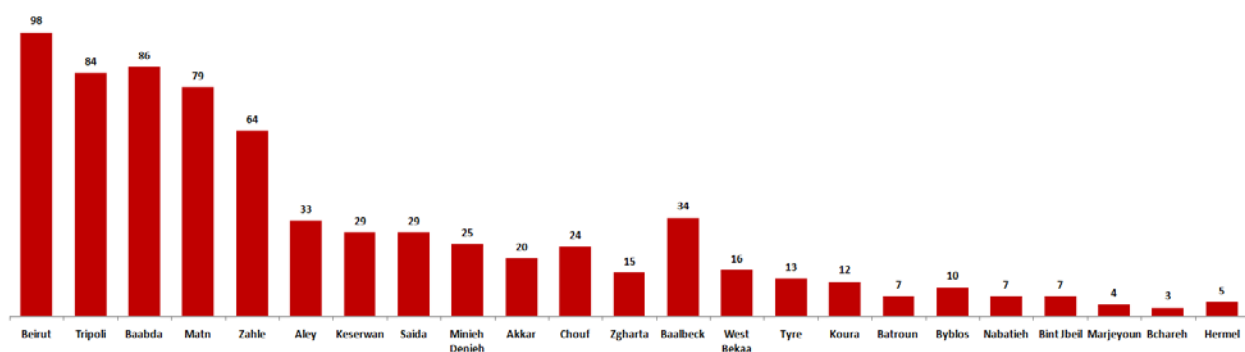
Distribution of Active Cases by Districts



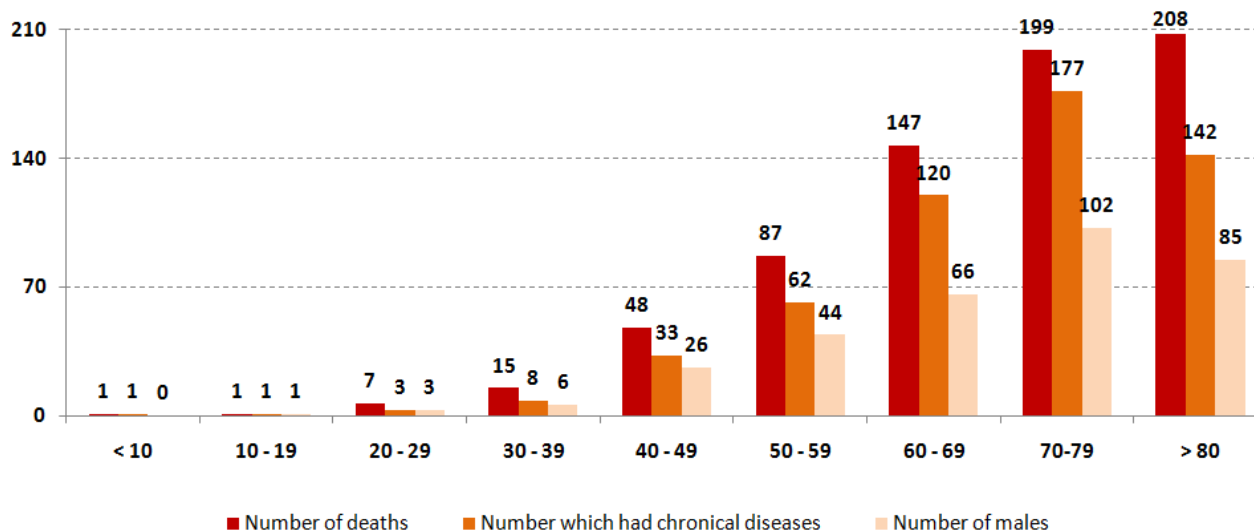
Recoveries



Distribution of deaths by Governorates



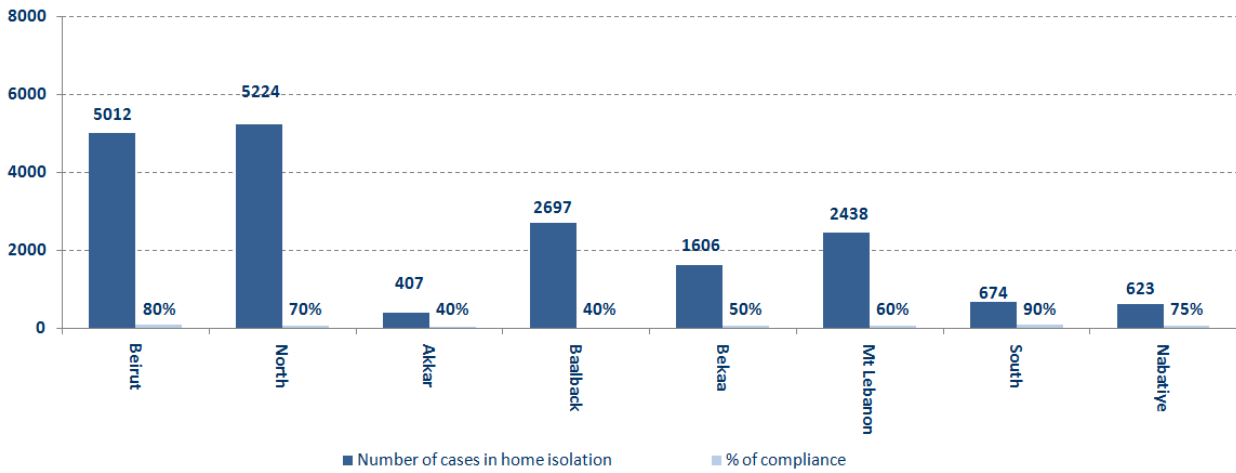
Distribution of deaths by Age



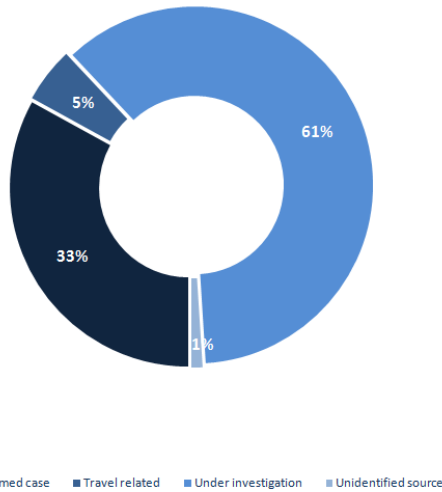
The distribution of the recorded deaths during the past 24 hours

Hospital	Residence	Gender	Age	Chronic
Al Jabal Hospital	Baabda	Female	78	Yes
Ra'asoul Aazam Hospital	Baabda	Female	49	Yes
Saint George - Hadath	Baalbek	Female	27	No
Sacred Heart Hospital	Matn	Female	76	Yes
Baalbek Gov Hospital	Baalbek	Male	49	Yes
Bahman Hospital	Baabda	Male	54	Yes
Al Jabal Hospital	Baabda	Female	78	Yes
MSF	Zahleh	Male	59	Yes
Saint George - Hadath	Baalbek	Male	85	Yes
Saint George - Hadath	Baabda	Female	74	Yes
Ain wZain Hospital	Chouf	Female	87	Yes
Ain wZain Hospital	Aleyh	Female	89	Yes
Ain wZain Hospital	Chouf	Male	74	Yes

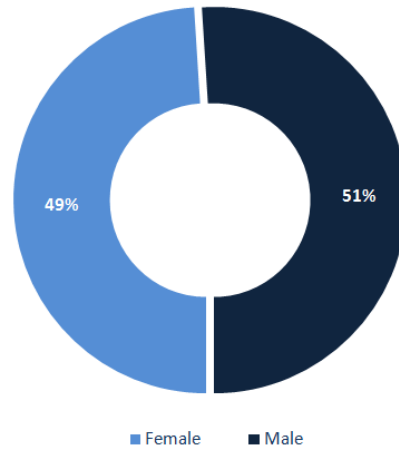
Number of individuals in home isolation and percentage of commitment to isolation



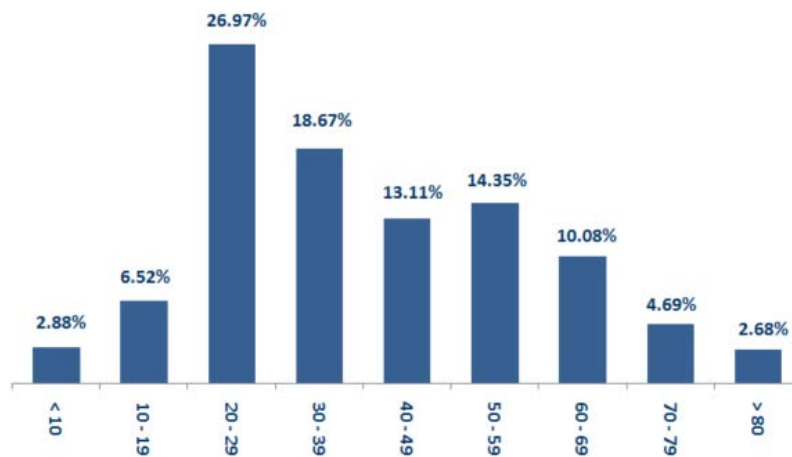
Exposure



Distribution according to gender



Distribution by age



Decisions and actions taken – 11/07/2020

Ministry of Public Health

- The Ministry of Public Health reported that PCR examinations had been completed for flights that arrived in Beirut and were conducted at the airport on 11/2/2020, where seven new cases were recorded, distributed over the following flights:

Arriving from	Company	Flight Number	Number of Positive Cases
04/11/2020			
Cairo	Egypt Airways	713	2
Al Najaf	Iraqi Airways	139	4
Istanbul	MEA	266	3
Adana	Pegasus	6700	2
Baghdad	MEA	323	1
MEA	MEA	268	3
Istanbul	Turkish Airlines	836	3
Cairo	MEA	307	1
Total			19

Lebanese Red Cross

237,429	Number of PCR tests transferred to laboratories	54,501 (7 New)	Number of additional ambulance centers ready to respond	48	ambulance centers	7,714 (57 New)	cases transferred to hospitals
166	Number of volunteers trained to transfer PCR tests	1,498	Number of trained paramedics	8,855	total number of respondents	99,771 (1043 New)	number of those benefiting from awareness *sessions
967	The number of university volunteers trained to follow up on prevention measures in companies and institutions	291	Number of university volunteers trained to conduct awareness sessions	550	total LRC volunteers for covid19	8,752	number of trained managers for isolation centers
4,659 (5 New)	Number of beneficiaries from educational electronic platforms COVID-19	261,781	Number of distributed equipment	1,253,885	total distributed posters, brochures, and flyers on covid19 prevention	781 (1 New)	number of prisons that have been disinfected

General Directorate of Internal Security Forces

The number of seizure records during the past 24 hours					The total number of records since 03/08/2020	
Written records of violating institutions (absorptive capacity and preventive measures)					114	
Written records of persons violating the decision to wear a mask					325	
Written records of people violating the general mobilization decision (Aragil* and social distancing)					459	
Total					928	
					Beirut	22,622
					Mount Leb	23,438
					Begaa	9,568
					North	8,062
					South	8,826
Beirut	Mount Leb	Begaa	North	South	Total	
308	323	71	67	159	72,516	

General Directorate of State Security

- Reporting the suspension of lessons at Tibnin Official High School in Nabatiyeh, after evidence of infection among the students, as the students who had contact with them will be quarantined for a period of 14 days.
- Carrying out patrols in the Baalbek-Hermel region, in coordination with the municipalities, to ensure that the shops adhere to the preventive measures and procedures.
- Ten new recoveries were reported in the General Directorate of State Security, bringing the total number of positive cases to 35.
- Notification of the percentage of compliance with the general mobilization decision in the governorates, which came as follows within the past 24 hours:

Beirut	South	North	Akkar	Begaa	Nabateih	Baalbek Hermel	Mount Leb
50%	35%	42%	40%	41%	75%	35%	45%

General Directorate of General Security

- The report of the death of a Palestinian in Nahr Al-Bared camp, as a result of being infected with the Coronavirus.
- Reporting the commitment of the municipalities to the decision of the Minister of Interior and Municipalities:

Municipalities that abided by the decision	Municipalities didn't abide by the decision
<ul style="list-style-type: none"> - Bekaa District: Kfar Zabad, Mashghara, Yanta, Qaraoun, Lala, Qaa Al-Reem, Farzol, Niha - Towns and villages located within the Aley district. - Towns and villages within the Chouf district. 	<ul style="list-style-type: none"> - Akkar District: Nandat - Chouf District: El Kharroub District

- Follow up the implementation of the required security and preventive measures at the airport, ports and border crossings.
- Reporting cases registered in the various districts and cases in home quarantine.

Ministry of Public Works and Transportation

Departing Flights		Arriving Flights	
Number of Flights	40	Number of Flights	39
Number of Departing Individuals	4,293	Number of Arrivals	3,675

Port	Entered			Left		
	Import	Direction	#	Export	Direction	#
Beirut	Cattles	Ukraine	1			
	Cars	Turkey	1			
Tripoli				Containers	Turkey	1
Jouneih				Fuel Oil	Jeyyeh Port	1
Total			2			2

General announcements

Based on the recommendations of the Committee for the Follow-up of Preventive Measures and Procedures for Coronavirus No. 710 / AJAD on 10/30/2020, the Ministry of Interior and Municipalities issued Resolution No. 1358 on 11/1/2020 regarding the continued closure of some villages and towns due to the high number of infections. Corona virus in it. The decision stated the following:

- Determining the times of exit and entry to the streets and roads in all Lebanese regions covered and not covered by the closure decision
 - The continued closure of bars, cabarets, and nightclubs, and the banning of public and private parties, social events and gatherings on the entire Lebanese territory, and permission for restaurants and cafes, provided that they do not exceed 50% of the absorption rate and adhere to health conditions (safe distance, not overcrowding)
 - When necessary, citizens are obliged to wear a mask to cover the nose and mouth when traveling and to adhere to health conditions (safe distance, not overcrowding)
 - It is exclusively for the Minister of Education and Higher Education to take the decision to open or close educational institutions and administrative units
 - Determining the number of people traveling in public and private means of transport with the obligation to wear masks for the driver and passengers
- Other measures:
- Full closure of the towns mentioned in the decision starting from 5:00 a.m. on Monday 11/2/2020 until 5:00 a.m. on Monday 9/11/2020
 - To suspend work in all official and private institutions located within the scope of these villages and towns, with the exception of institutions and departments of the Ministry of Education and Higher Education, according to what the Minister deems appropriate.
 - Coordination with the religious authorities in terms of closing places of worship and canceling religious events
- Excluding some sectors and employees from the decision, with the necessity to keep the job card in order to present it when necessary
- Assigning governors to:
- Determine the municipal zone in the received towns Take the necessary measures to implement this decision and request the support of the General Directorate of Internal Security, when necessary
 - Emphasize on citizens the need to adhere to public safety procedures and to adhere to wearing a mask when traveling in case of necessity
 - Assigning the district attorneys to instruct the mayors to review the lists of positive cases on the IMPACT platform daily and coordinate with the judiciary doctor and the Lebanese Red Cross to take the appropriate decision
- Assigning the General Directorate of Internal Security Forces to strictly enforce this decision and suppress violations of public mobilization decisions, and to organize arrest records against violators.

Note: The decisions can be found at www.drm.pcm.gov.lb

Examples of lack of adherence to safety measures

Failure of some municipalities to abide by the Ministry of Interior and Municipalities Decision No. 1025/2020 related to the closure of towns that have a high risk of the spread of the epidemic.

- Demand gatherings and demonstrations.
- Failure to comply with the preventive measures and procedures required in several stores and markets (putting on a muzzle or face mask, sterilizing hands, maintaining a safe distance).
- Non-compliance with the 50% occupancy rate in several restaurants and amusement game centers.
- Gatherings for social events.
- Failure of those in contact with confirmed cases to adhere to home isolation procedures until the results of the laboratory tests are issued.

If you feel any symptoms, call directly the hotline of the Ministry of Public Health: 1214 or 01/594459

Laboratories that did not comply with the procedures approved by the MoPH About the information required to be recorded for infected cases within the past 24 hours

Laboratories that did not specify the Governorate

Laboratory/Hospitals	Cases
Laboratoire Inovie / Fayyadieh	128
Hadi Laboratory/ Haret Hreik	15
Rafic Hariri University hospital	11
Hospital Dar Amal / Baalbeck	11
Hospital Elias Hraoui Gouvernemental-Zahleh	5
Hospital Haddad des Soeurs du Rosaire	4
Hospital Makassed	3
Hotel Dieu de France	1
Hospital Ain wa Zain	1
Mashrek Medical Diagnostic Center MDC	1

Number of positive cases without specifying the place of residence

Laboratory/Hospitals	Cases
Laboratoire Inovie / Fayyadieh	129
Hadi Laboratory/ Haret Hreik	15
Hospital Dar Amal / Baalbeck	12
Rafic Hariri University hospital	11
Mashrek Medical Diagnostic Center MDC	7
Doctors Center	6
Hospital Nabatieh Nabih Berry Gov	5
Al Karim Medical Lab	5
Hospital Elias Hraoui Gov/ Zahleh	5
Hospital Mont liban	4
Hospital Haddad des Soeurs du Rosaire	4
Hospital Bahman	3
Hotel Dieu de France	3
Hospital Makassed	3
Hospital American university	1
Hospital Ain wa Zain	1

Number of positive cases without a phone number	
Laboratory/Hospitals	Cases
Hospital Dar Amal / Baalbeck	10
Hadi Laboratory/ Haret Hreik	2
Hospital Ragheb Harb	2
Rafic Hariri University hospital	1
Hospital Makassed	1
Hospital Mazloun	1

A list of the laboratories accredited by the MoPH to conduct PCR tests

المختبرات الحكومية المؤهلة إجراء التشخيص المخبري لفيروس كورونا بطريقة الـ RT-PCR

المختبر	الموقع
مستشفى رفيق الحريري الجامعي RHUH	بيروت
مستشفى حيا الحكومي	حيا
مستشفى طرابلس الحكومي	طرابلس
مستشفى البترون الحكومي	البترون
مستشفى فتوح كسروان الحكومي (النيوار)	كسروان
مستشفى نبيه بزي الحكومي الجامعي	البيطية
مستشفى نين الحكومي	نين
مستشفى بنت جبيل الحكومي	بنت جبيل
مستشفى بعليك الحكومي	بعليك
مستشفى الرئيس الياس الهراوي الحكومي	زحلة

مختبرات المستشفيات العسكرية

Hôpital Militaire Central	المستشفى العسكري المركزي في بيروت	بيروت
---------------------------	-----------------------------------	-------

المختبرات المؤهلة لأخذ عينات "المسحات الأنفية" بطريقة Drive- thru

مختبر ميديكال دياغنوستيك تريمانت سنتر (الحمراء)	Medical Diagnostic Treatment Center (MDTC)	بيروت
مختبر ميد لاب	MedLab SAL CIC ALS (الحمراء - الجبلينور)	بيروت
مختبرات عيتاني	Itani Medical Laboratories (المزرعة)	بيروت
مختبر أ ب سي	ABC Laboratories	الأشرفية
مختبرات معوض الطبية	Mouawad Medical Laboratory	التياح
مختبرات الشياح (د. فؤاد ربحان)	Rihan Medical Center	التياح
مختبر إكسبرت لاب	Expert Lab	النصورية
مختبر لايف لاب	Life LAB	بعليك
مستشفى الرياق	Riyak Hospital	رياق

المختبرات الخاصة المؤهلة لإجراء التشخيص المخبري لفيروس كورونا بطريقة الـ RT-PCR

المختبر	الموقع
AUBMC مستشفى الجامعة الأميركية	بيروت
Hotel-Dieu de France (HDF) مستشفى أوتيل ديو الجامعي	بيروت
مختبرات رودولف ميريو (الجامعة اليسوعية – المتحف) Laboratoire Rodolphe Mérieux (Université Saint-Joseph)	بيروت
Saint-George Hospital - UMC مستشفى القديس جارجيوس الجامعي	بيروت
Makassed General Hospital مستشفى المقاصد	بيروت
LAU Medical Center - Rizk Hospital مستشفى رزق الجامعي	بيروت
Hôpital Libanais Geitawi - CHU مستشفى اللبناني الجعيتاوي الجامعي	بيروت
Hôpital Notre-Dame du Rosaire مستشفى الوردية	بيروت
Doctor 's Center مختبر مركز الأطباء	بيروت
Fontana Laboratories مختبر فونتانا (الحمرا)	بيروت
مختبر الأمن العام (العنابية)	بيروت
Laboratoire Jabre-Ghorra مختبرات جبر وغرة	بيروت
Saint Marc Medical & Diagnostic Center مختبر السان مارك	بيروت
Laboratoire Moderne (Modern Lab- Berjaoui) المختبرات الحديثة	الغبيوي
Sahel General Hospital (SGH) مستشفى الساحل	الغبيوي
مستشفى الزهراء الجامعي	الغبيوي
Al Zahraa Hospital - UMC مستشفى الرسول الأعظم	برج الراجحة
مستشفى بهمن	
Al Rassoul Al Aazam Hospital Bahman Hospital	حارة حريك
مختبر ناتيونال دياغنوستك سرفيس كومباني	
National Diagnostic Services Company (NDSC)	حارة حريك
Medical Diagnostic Center مختبر الدكتور محمود عثمان - مركز التحاليل الطبية	المرجة
American Diagnostic Center (ADC) مختبر أميريك دياغنوستك سنتر	الجناح
Mount Lebanon Hospital مستشفى جبل لبنان	بعنا
Hôpital Saint-George – Hadath مستشفى السان جورج الحدث	بعنا
Al Hadi Laboratory مختبر الهادي	بعنا
INOVIE-Liban مختبر	بعنا

Hôpital du Sacré- Coeur مستشفى قلب يسوع	الحازمية
Clinigene مختبر كلينيجان	الحازمية
Hôpital Dr.Samir Serhal مستشفى سرحال	المتن
Transmedical for Life مختبر ترانس ميدكال فور ليف	المتن
Haroun Hospital مستشفى هارون	الزلفا
Bellevue Medical Center (BMC) مستشفى بلفو	المنصورة
Hôpital Albert Haykal مستشفى هيكال	الكورة
Centre Hospitalier du Nord (CHN) مركز الشمال الإشتغاني	زغرتا
Mazloum Hospital مستشفى المظلوم	طرابلس
Al Mounla Hospital مستشفى الملا	طرابلس
Nini Hospital مستشفى النيني	طرابلس
مختبر ميكروبيولوجيا الصحة والبيئة LMSE - المعهد العالي للدكتوراه، الجامعة اللبنانية	طرابلس
CHU - Notre-Dame des Secours مستشفى سيدة المعونات الجامعي	جبل
Lab Akiki & Boulos مختبر عقيقي وبولس	جبل
Centre Médical Wakim مختبر واكيم	جونية
Ain Wazein Hospital مستشفى عين وزين	الشوف
Hammoud Hospital UMC مستشفى حمود الجامعي	سيدا
Al Karim Medical Laboratory (KML) مختبر الكريم	سيدا
Sheikh Ragheb Harb Hospital مستشفى الشيخ راجب حرب	البيتمنة
Sabbah Diagnostic Center (SDC) مختبر الصباح	البيطية
Jabal Amel Hospital مستشفى جبل عامل	صور
Mashrek Diagnostic Center (MDC) مختبر المشرق	صور
Dar Al Amal University Hospital مستشفى دار الأمل الجامعي	بعلبك
Khoury General Hospital مستشفى خوري	زحلة
Medical Care Center (MCC) مختبر ميدكال كير سنتر	زحلة