

LEBANESE REPUBLIC
Presidency of the Council of Ministers



Beirut FER
Beirut Forward Emergency Room
مركز الطوارئ المتكامل بيروت



وحدة إدارة مخاطر بيروت
Beirut Risk Management Unit

Beirut Port Disaster Situation Report # 6

4 October 2020

The weekly situation report addresses the public at large and provides highlights of the different aspects of Response to Beirut Port Disaster being done by different national and international stakeholders in terms of mobilization and coordination of resources to meet affected peoples' needs.



The Lebanese Government Response Plan aims at saving lives; providing immediate basic assistance to all affected people; restoring life conditions in the affected areas and implementing a national recovery plan including health, economy, education, social and environment sectors.

DRM Contact: Tel: 01-983670 Fax: 01-983873 Email: info@drm.pcm.gov.lb Website: <http://drm.pcm.gov.lb>

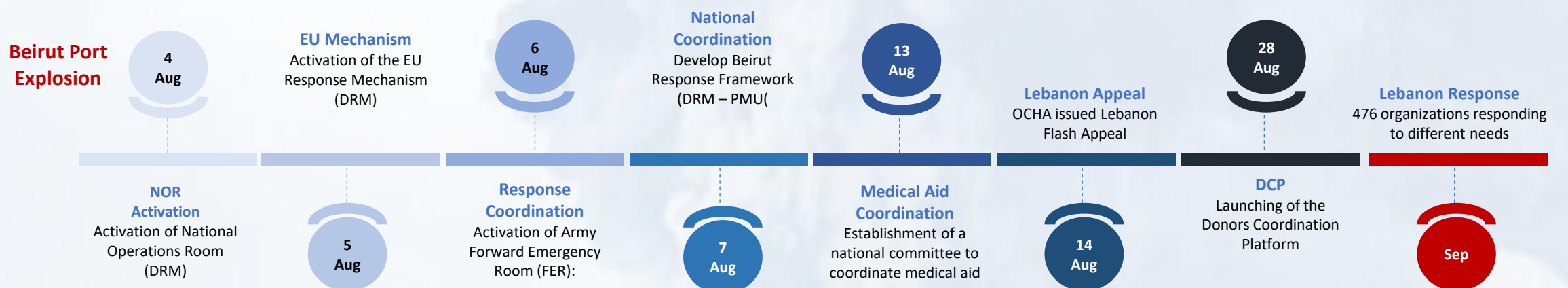
Army FER Contact: Tel: 01/990055 – 01/987002 – 01/987003 Fax: 01/987004 Email: ADVEMERGENCYROOM@GMAIL.COM

HIGHLIGHTS

- 9 people are still reported missing according to the Lebanese Armed Forces. 3 Lebanese, 5 Syrians and 1 Egyptian (FER SitRep 3.10.2020).
- 202 people are reported victims of the explosion by the Internal Security Forces.
- Up to 37,000 of the most vulnerable households will benefit from multi-purpose cash transfers for up to six months through the EU Trust Fund.
- During the reporting period 476 organizations were registered with the Forward Emergency Room (FER) and supporting in providing basic needs assistance, health support, structural restoration of damaged houses, displacement support, and waste management (FER SitRep 3.10.2020).
- On the initiative of its President, H.S.H. Prince Albert II, the Monaco Red Cross will release €100,000 in response to the explosions which have ravaged the Lebanese capital. €50,000 will be allocated to the International Federation of Red Cross and Red Crescent Societies and €50,000 to the Lebanese Red Cross.
- Within the UN coordinated response, 35 organizations are joining efforts and continue their intervention in 14 damaged areas and provide support to people within the food safety, health, shelter, protection and WASH sectors (OCHA, Beirut Port Explosions: Partners' Presence Map. 25.9.2020).
- Mercy Corps and eight partners (ACF, ACTED, CARE, DRC, IRC, Al Majmoua, Oxfam, and Save the Children) assessed micro, small and medium-sized enterprises (MSMEs) across the blast affected areas. The survey consisted of 1,164 business owners across 21 neighborhoods in Beirut (Mercy Corps, BEIRUT MSME JOINT RAPID NEEDS ASSESSMENT September 2020).
- Up to date 32,189 households in Moudawar, Ras Beirut, Rmeyl, Mina El Hossn, Basta El Tahta and Mousaitbe are reported in need for humanitarian assistance where food is remaining the most needed support ((FER SitRep 3.10.2020).
- Up to date 106,453 households in the damaged area are surveyed and reported in need for construction support (FER SitRep 3.10.2020).
- 127 public and private hospitals and medical centers across Lebanon have received medical aid including medical supplies, medicines and equipment since the beginning of response.



SITUATION OVERVIEW



After eight weeks of the devastating disaster that hit Lebanon on August 4th, the challenges facing the Lebanese Government and its response partners remain in its capability to provide the needed support especially in terms of households and shelters rehabilitation, food security and healthcare services. Another challenge is the capacity to revive small and medium business enterprises and the ability to provide fast income-generating activities for affected people.

On-going interventions include completion of the Port area damage assessment, households and SMEs damage assessment, provision of food, health and protection support, mobilization of resources for short and medium terms recovery, developing and implementing a waste management plan and initiating recovery in key sectors such as hospitals, schools and public administrations.

COVID-19 Latest Updates

Daily updates on COVID-19 status can be found at the following links:

Daily COVID-19 Situation Report: <http://drm.pcm.gov.lb>.

COVID-19 beds distribution & availability at hospitals: <https://bit.ly/DRM-HospitalsOccupancy-Mobile> - <https://bit.ly/DRM-HospitalsOccupancy-PC>.

Total Cumulative from Feb 2020	Total Active Cases	Total Death	Total Cases in Health Sector	Total COVID Hospitals	Total COVID Beds	Total COVID ICU Beds
 44,482	 24,294	 406	 1,078	 31	 831	 193

INTERNATIONAL AID

Countries Direct Support

More information about the type and source of aid, needs and damage in the public sector can be found at the Donors' Coordination Platform <https://dcp.pcm.gov.lb>



87
Users



74
Donors



82
Hospitals
Distributions



47
Other
Distributions



225
Aid
Transaction



44,792,046 \$
Cash Aid
Transaction



195
In-kind Aid
Transaction

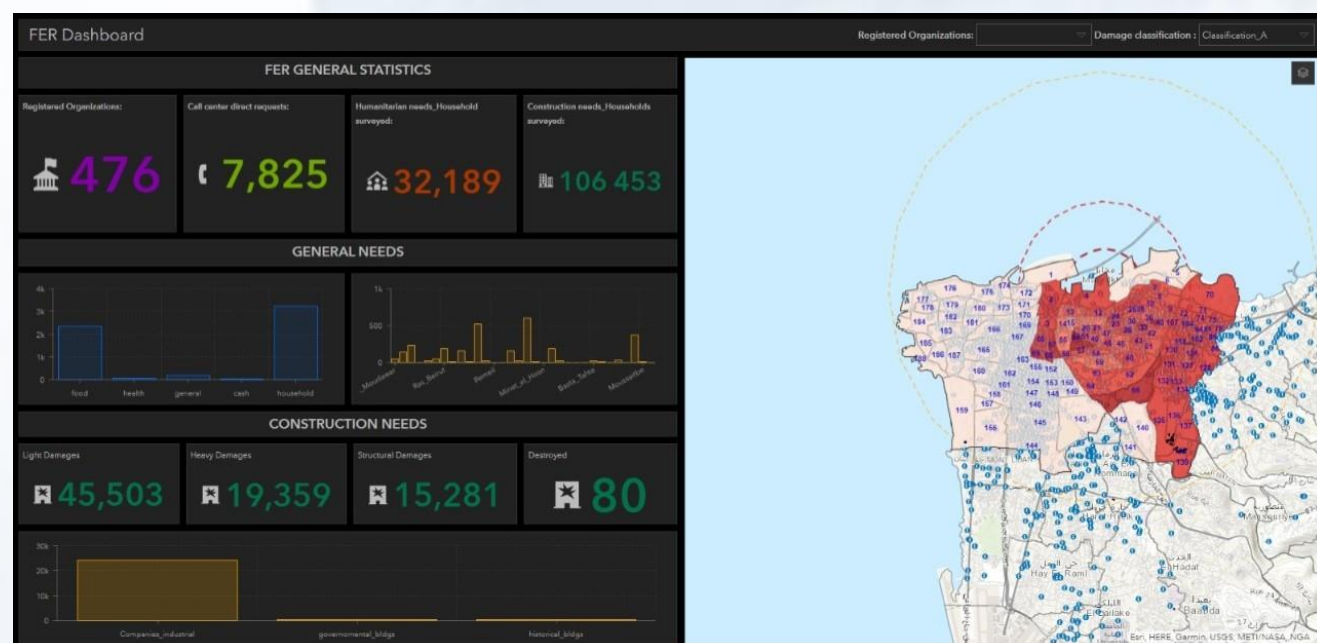


3,022
Inventory
Items

During reporting period Belgium, Switzerland, Italy, Cyprus, EU, Sweden, Brazil, Jordan, Austria, Malta, Algeria, Spain, France, Greece, USA, Australia, Egypt and Canada have reported in-kind and cash donations to Lebanon in response to the disaster (DCP 4.10.2020).

SHELTER

The Forward Emergency Room (FER) SitRep – 3.10.2020.



Summary of interventions in the affected areas:	Total Cumulative	New in reporting period
No. of houses assessed	31,189	2,428
No. of restored houses	2,100	268
No. of stabilized houses	19	0
No. of houses evacuated	72	0
No. of houses under restoration	2,450	1,025
No. of NGOs engaged	35	0

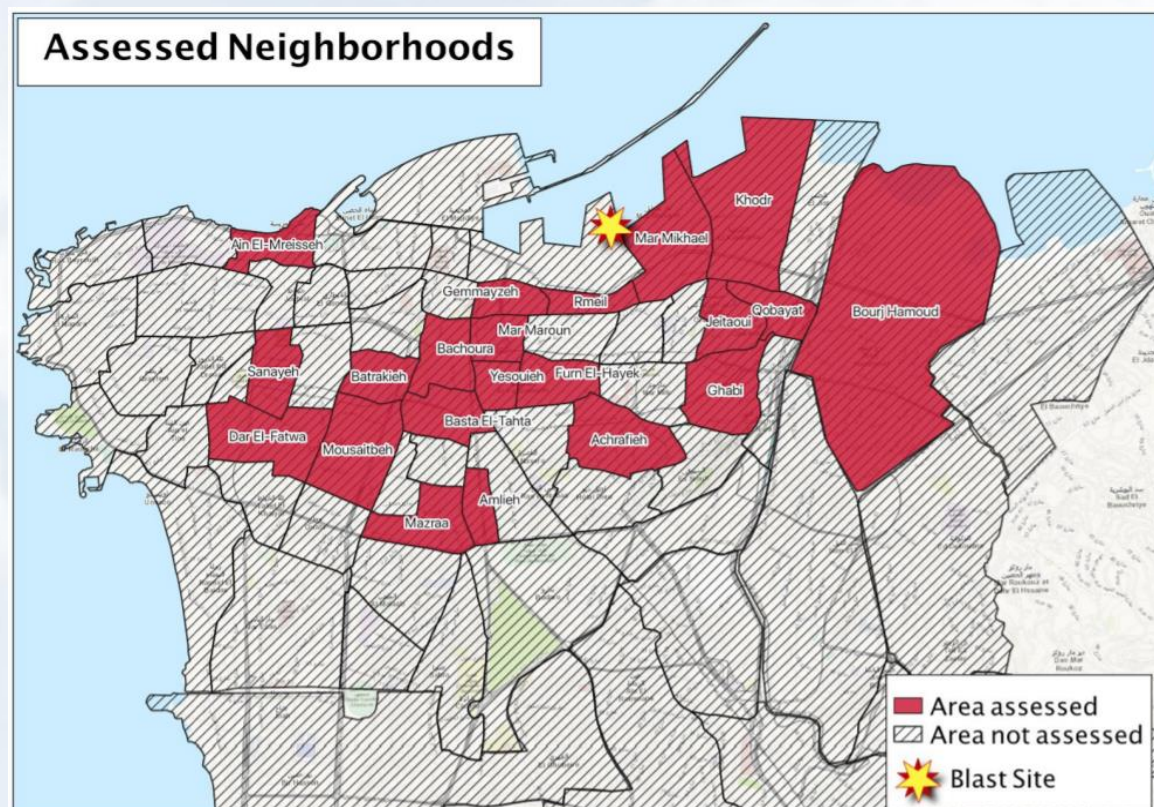
35 NGOs active in the Shelter Sector: AA Stouh Beirut, Abniat el Masaraf, ACTED, Ahla Fawda, Alliance Church, AVSI, Beib w Chebbak, Beit El Baraka, Common Effort, Dorcas, DPNA, DT Care, Green Lebanon association, House of Christmas, INTERSOS, IOCC, Leb relief, Lebanese Red Cross, LOT, Medair, Nawraj, Nusaned, Offre Joie, Orion and partners (Be Beirut Organization), Ousaned, Rachel Kheir, Rotary club - Beirut cedars, Sar Badda, Save the children, Solidarites International, Son of Man, Tanmiyat Beirut, UNDP, World Vision, Lions

Micro, Small and Medium-sized Enterprises (MSMEs) Damage Assessment

BEIRUT MSME JOINT RAPID NEEDS ASSESSMENT September 2020

Mercy Corps, Action Against Hunger (ACF), ACTED, CARE International, Danish Refugee Council (DRC), International Rescue Committee (IRC), Al Majmoua, Oxfam, Save the Children

- The survey consisted of 1,164 business owners across 21 neighborhoods in Beirut.
- The overwhelming majority of surveyed MSMEs are very small, with 96% employing fewer than 10 people. A small proportion (4%) of surveyed larger establishments (>10 employees) represent 42% of total employment in the assessment. 97% of surveyed businesses are Lebanese-owned. 19% of surveyed businesses are owned by women.
- A majority of assessed MSMEs operated in the retail and services sector, followed by the food sector (such as small snack shops), grocery shops, maintenance and repairs, hospitality, and utilities.
- 56% of businesses experienced damage to their inventory (45% had minor and major damage to their products and inventory, and 11% reported destroyed inventory). 66% of businesses did not experience any damage to their equipment, while almost 25% had either minor or major damage to their equipment and 9% reported destroyed equipment.
- Most surveyed businesses were formally registered (66%), with 34% unregistered.



HEALTH

127 public and private hospitals and medical centers across Lebanon have received medical aid including medical supplies, medicines and equipment since the beginning of response. The international community as well as international and national organizations are still mobilizing cash and in-kind support to provide healthcare services. More information about the medical aid received by the hospitals and medical centers are found at the Ministry of Public Health website: <https://www.moph.gov.lb/>

Hospitals / Medical Centers medial aid recipients					
Nabatiyeh (Public)	Zahle (Public)	Serhal	Saint George	Bcharri (Public)	Lady of Lebanon
Mount Lebanon	Tebnin (Public)	Orange Nasso	Saint Louis	Al Hayat	Osseiran
St. George - Hadath	Tripoli (Public)	Middle East - Bsalim	Lady of Martine	Batroun (Public)	Ain Wzein
Al Burj	Saida (Public)	CMC	Saint Therese	Room	Saint Charles
Al Rassoul	Saint Joseph	Baalbeck (Public)	Al Monla	Beit Chabab	Tannourine (Public)
Al Geitawi	Bellevue	Abou Jawdeh	Al Hayek	Sour (Public)	Dar El Hekmeh
Behmen	Hermel (Public)	Al Batoul	Salah Ghandour	Al Salam Tripoli	Ehden (Public)
Baabda (Public)	Al Chahhar (Public)	Al Bekaa	Western Bekaa	Al Saydeh Zgharta	Bhannes
Al Sahel	Azouniyeh	Al Shifaa	Kamal Jumblatt	Al Salam - Qobayat	Beirut Nawfal
Al Zahraa	Abdalla El Rassi (Public)	Chtura	Rayyak	Sir El Donnieh (Public)	Rahhal Akkar
Risk	Rashaya (Public)	Dar El Amal	Ragheb Harb	Al Erfan	Dar El Shifaa Tripoli
Dahr El Bashek	AUB	Haykal	Labib Medical	Al Kartbawi	Dallaaa -Saida
Ftough Kesserwan	Al Mashrek	Jezzine (Public)	Tel Chiha	Seblina (Public)	Haroun
Sacred Heart	Al Makassed	Jouaya	Marjeioun - Public	Mazboud	Najjar
Hotel Dieu	Al Wardieh	Maounat	Joseph Medical Center	KMC - Kesserwan	Bshamoun
Al Bitar	Fouad Khoury Beirut	Osman	Beit Chabab	Kharroubi	Saint Hammoud – Saida
Karantina (Public)	Al Nakib	Deir El Salib	Al Mayyass	Bint Jbeil (Public)	Meis el Jabal (Public)
Kana (Public)	Hassbaya (Public)	Moarbess	Mashghara (Public)	Hamed Farhat	Al Mazloun
Al Koura	Lebanon Sacred Heart	Al Fakih	Al Assi – Hermel	Al Rayyan	Al Rohban
Al Kheir	Khoury – Zahle	Hekmeh – Zahle	Al Jabal	Al Tatari	Al Menieh
Al Burji – Koura	Doctors – Manara	Charity Islamic – Tripoli	Al Arz	Ibn Sina	CHN
Al Mortada					



6 field hospitals contributed by Morocco Army, Italian Army, Qatar Army, Poland EMT PCPM (COVID support), UK EMT and Samaritan's Purse EMT in addition to 4 health care centers operated by the Lebanese Red Cross in Achrafieh, Mousaitbe, Tarik El Jdidi and Chiyah are providing health support to people (FER SitRep 3.10.2020).

FOOD SECURITY



Food Boxes
21368 (new)

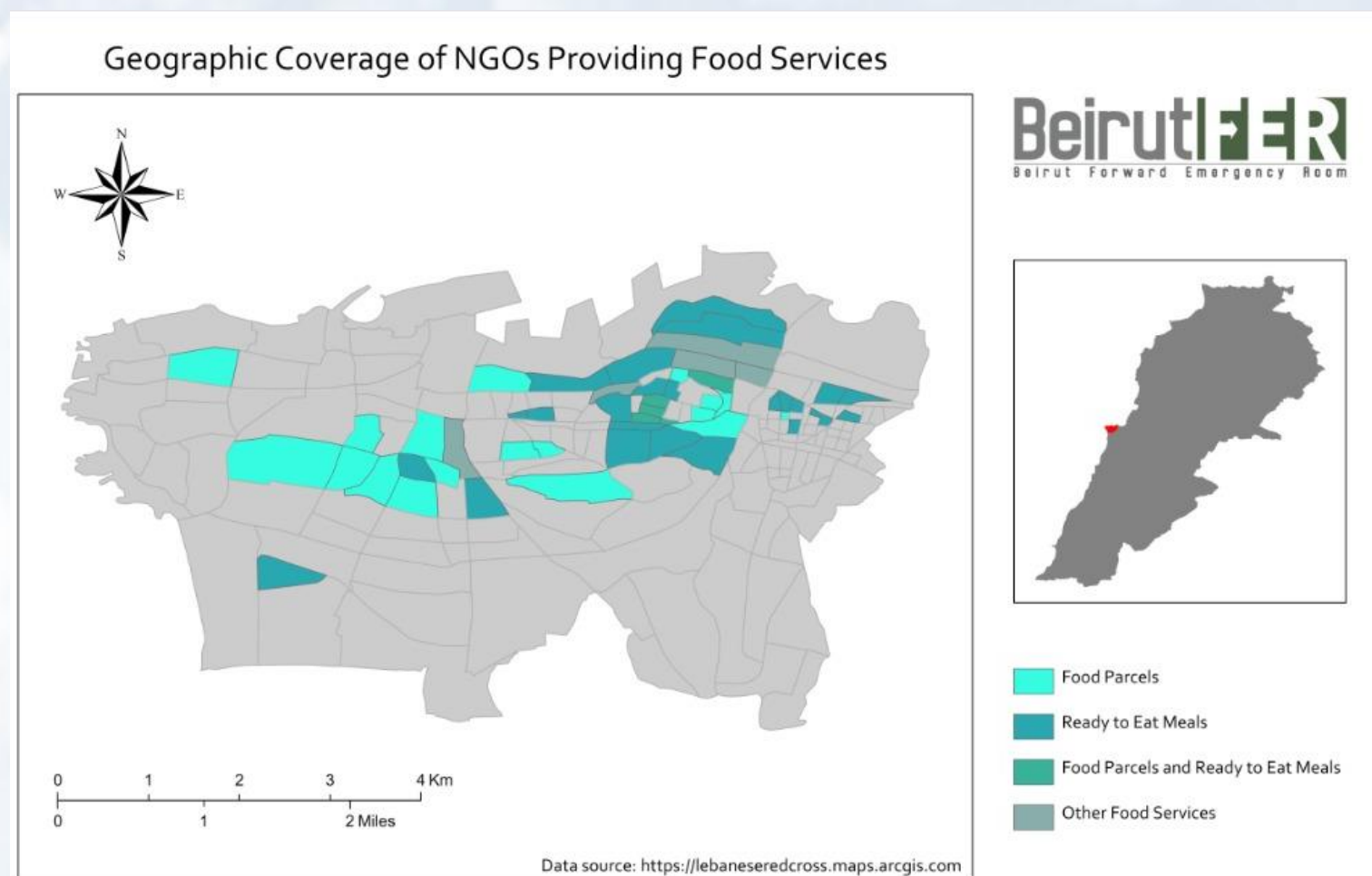


Hot Meals
33373 (new)



Food Parcels
9185 (new)

Up to date 157982 (63926 new) food items were provided to people in the affected area through the FER and its Food Security Partners (UN agencies, International Organizations, National Organizations, Private Sectors, Volunteers).



36 NGOs are collaborating with Beirut FER and have access to the workforce platform: Ahbab al khayr al ejtima3iya, Ahla Fawda , Banin, Beity ana Baytak , Beit al 3ineye al llehiye, Chababik, CHREEK, Common Effort, Compassion Protestant Society , Ensan, Esteklal El Khayriyye, Farah social foundation , Ghirass litanmiyat al mujtama3 , Heart of Lebanon , Jamiiyat al mubadara al fardiya li houkook al insan , Jamiiyat Haena nabdaa , Jannat Bladi Foundation, Jouzourouna , Jeunesse etudiant Chretien , El Jarrah Scouts , El Mabarrat Scouts , Koun Ijabi, Lebanon of tomorrow, Little Push, Lions , Massis Hope , Harakat al chabiba al orthodoxia , Majmouat al moutatawiin el hamraa , Nusaned, OMNI Games Of Beirut, Rabitat Abnae Bayrou , Racht Kheir , Secour Islamique France , Son of Man , Sada Association , and World Vision



Web Links

Weekly situation reports by the
Presidency of the Council of Ministers
<http://drm.pcm.gov.lb>

Donors Coordination Platform
<http://dcp.pcm.gov.lb>

Forward Emergency Room FER Website:
www.beirutfer.com

THE ARABIC VERSION
OF THE REPORT WILL BE
ISSUED IN 24 HOURS

For more information:
DRM: Tel: 01-983670 Fax: 01-983873 Email: info@drm.pcm.gov.lb Website: <http://drm.pcm.gov.lb>
Army FER : Tel: 01/990055 – 01/987002 – 01/987003 Fax: 01/987004 Email: ADVEMERGENCYROOM@GMAIL.COM