



Lebanon National Operations Room Daily Report on COVID-19



Tuesday, November 03, 2020

Report #230

Time Published: 10:30 PM

New in the report:

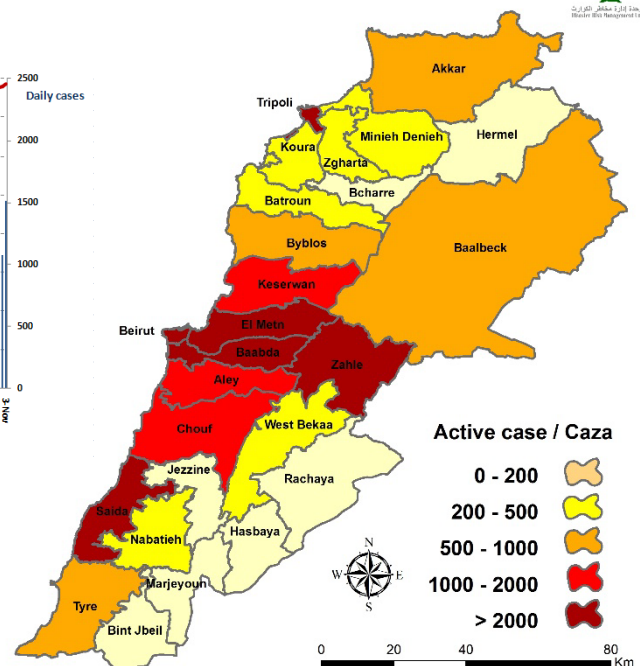
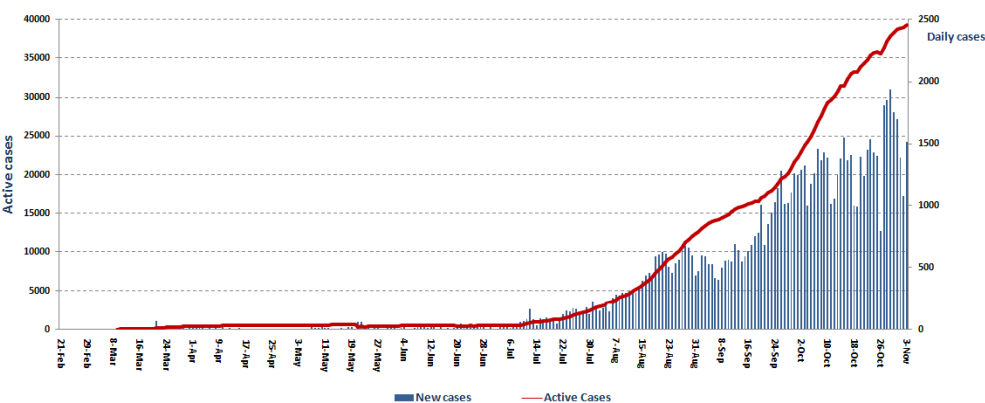
- The number of cases with artificial respiration
- The names of the laboratories that did not specify the district, the place of residence, or the phone number for a number of positive cases, which affects the tracking of cases and identification

1,512 New Cases		83,697 Total Cases since 21.2.2020		667 Total Deaths		45,032 Total Recovered	
1,470 Residents	42 Expats	82,787 Residents	2,422 Expats	15 New Deaths		1,147 New Recovered	
139 Ventilated Cases	1,439 Total Cases in the Health Sector		39,510 Total Active Cases		780 Hospitalized Cases		273 Total Cases in ICU
84 Deleted Status due to its recurrence	8 New Cases in the Health Sector		38,730 Cases in Home Isolation		507 Mild Cases		0 New Cases in ICU
1,206,231 COVID-19 Tests since 21.2.2020		Lebanon Status compared to the World					
996 COVID-19 Tests at Airport within 24 hrs.		15,503 COVID-19 tests for residents within 24 hrs.		Total Cumulative		85,209	
				Total Deaths		667	
				Deaths percentage		0,78%	
				Total recoveries		45,032	
						47,603,766	
						1,215,418	
						2.55%	
						34,185,087	

Ref: Ministry of Public Health Data

Number of Cases by Location

- 15,365 case is Under investigation



Beirut	93
Ein El Mraisseh	2
Ras Beirut	5
Manara	2
Qreitem	2
Raoucheh	1
Hamra	5
Msaitbeh	3
Mar Elias	1
Tallet Ed Drouz	1
Zarif	1
Mazraa	5
Borj Abou Haidar	6
Basta El Faouqa	3
Malaab El Baladi	1
Tariq Ej Jdideh	11
Horch	1
Ras En Nabaa	6
Bachoura	1
Basta Et Tahta	3
Normandie	1
Qobayat	1
Ashrafiyeh	16
Others	15
Baabda	283
Chiyah	15
Jnah	17
Ouzaai	14
Bir Hassan	5
Mahatet Sfair	6
Ghobeiry	10
Ein Al Rimmaneh	16
Furn Al Shebbak	5
Haret Hreik	46
Lailaky	6
Borj El Brajneeh	32
Mreijeh	16
Tahweetet Ghadir	7
Baabda	1
Hazmieh	6
Mar Taqla	1
Rihanieh	1
Hadat	41
Botchay	1
Wady Chahrour Olya	1
Bsaba	2
Abadieh	1
Ras El Metn	2
Araya	1
Salima	12
Hammana	1
Khalwat Falougha	1
Others	16
Jezzine	3
Jezzine	2
Lebaa	1

Chouf	63
Naameh	5
Chhim	8
Ketermaya	3
Anout	2
Sibline	1
Bourjein	1
Barja	8
Jiyeh	5
Wady Al Zainy	6
Almane	1
Rmeileh	1
Wardanieh	1
Mgheirieh	1
Zaarourieh	1
Deir El Qamar	1
Semqaniyeh	2
Kfarhim	3
Ein Zhalta	1
Safa	1
Deir Dourit	1
Moukhtara	2
Botmeh	1
Niha	1
Ammatour	2
Barouk	1
Others	3
Aley	85
Aamroussiyyeh	7
Hay El Sellom	20
Al Qoubbeh	3
Khaldeh	4
Al Oumara	13
Deir Qoubel	1
Aramoun	11
Baawarta	1
Bchamoun	9
Aley	2
Kahale	1
Qomatieh	1
Aytat	2
Bayssour	1
Qabr Chmoun	1
Bhamdoun Dayaa	1
Majdel Baana	1
Btater	1
Azzounieh	1
Mecherfeh	1
Ein Dara	1
Mreijat	1
Others	1
Rashayya	5
Rashayya Al Wady	2
Al Midane	1
Kfar Qouq	1
Others	1

Kesrwen	55
Sarba	1
Kaslik	1
Zouk Michael	3
Haret El Mir	1
Ghadir	1
Zouk Mosbeh	8
Adonis	2
Haret Sakhr	2
Sahel Alma	3
Tabarja	2
Adma & Dafneh	3
Bouar	1
Aqeibeh	2
Ajaltoun	1
Sehayleh	1
Daraya	2
Ghazir	2
Kfar Hbab	3
Kfour	1
Dar'oun	1
Ghabaleh	1
Salhie - Bizhel	2
Zeitoun	1
Qleiaat	1
Achkout	4
Feitroun	1
Kfardebiane	1
Blat	2
Others	1
Byblos	46
Byblos	11
Mastita	1
Blat	5
Eddeh	5
Amchit	4
Halat	4
Nahr Ibrahim	2
Ehmij	3
Hsoun	1
Fitreh	1
Kfoun	1
Binta'el	1
Bejjeh	1
Kfar Mas-houn	1
Gherfine	1
Fghal	1
Qartaba	1
Others	2
Western Beqaa	7
Mansoura	1
Kamed Al Loz	2
Sweiry	1
Al Marj	2
Others	1

Matn	140
Borj Hammoud	9
Sin El Fil	5
Jisr El Bacha	1
Jdeidet El Matn	15
Boushrieh	5
Dora	6
Rouda	1
Sabtiyeh	3
Deir Mar Roukoz	1
Dekwene	14
Antelias	7
Jal El Dib	8
Naqqach	3
Zalqa	5
Byaqout	1
Dbayeh	7
Mansourieh	5
Fanar	9
Ein Saadeh	2
Bsalim	3
Nabay	1
Beit El Kekko	1
Qornet Chehwan	2
Elissar	1
Rabweh	1
Beit El Chaar	1
Zouq El Kharab	2
Ein Aar	1
Mazrat Yachouh	2
Ein Aalaq	1
Qornet El Hamra	1
Broummana	1
Qenbet Brumana	1
Zahrieh	1
Mrouj	1
Dhour El Choueir	1
Baskinta	1
Baqaata Al Nahr	6
Others	4
Tripoli	62
Zeitoun	8
Bab El Raml	1
Tall	1
El Qoubbeh	8
Zahrieh	4
Tabbaneh	2
Bsatine	2
Mina N:1	3
Qalamoun	2
Beddawy	3
Madineh Jdideh	5
Others	23
Hasbaya	2
Hasbaya	1
Ein Qinia	1

Batroun	15
Kfar Aqqa	1
Mjeidel - Kfarhazir	1
Kosba	1
Qalhat	1
Deddeh	2
Anfeh	2
Bohsas	1
Dahr El Ein	2
Barsa	1
Nakhleh	1
Others	2
Zghorta	21
Zghorta	7
Rach'ine	2
Ardeh	1
Harf	1
Majdlayya	4
Aqbeh	1
Kfar Haoura	1
Bsebaal	2
Kfar Sghab	1
Meryata	1
Batroun	32
Batroun	3
Thoum	3
Kfar Abida	2
Shekka	12
Daraya	1
Ghouma	1
Abrine	1
Hamat	1
Ras Al Chaq'aa	1
Bshaaleh	5
Kfarhilda	1
Others	1
Marjeyoun	9
Ebl El Saqi	1
Borj Al Mulouk	1
Khiyam	1
Adaisseh	1
Taybeh	2
Houla	2
Touline	1

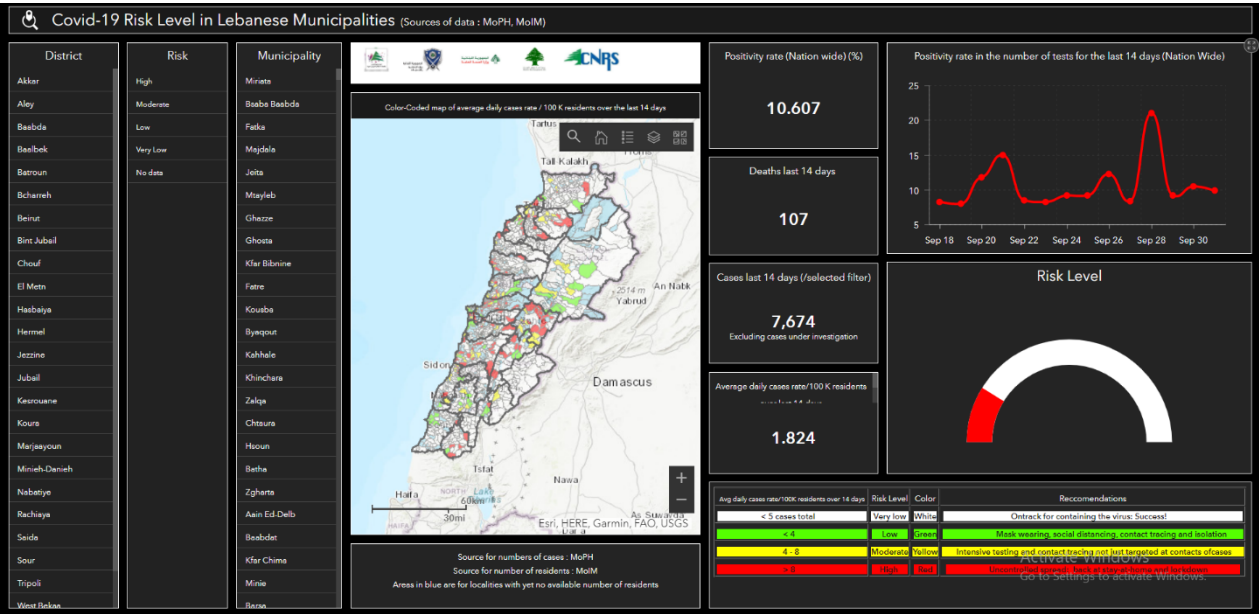
Akkar	12
Borj Al Aarab	1
Koueikhat	1
Mhammara	1
Nahr El Bared	2
Nsoub	1
Others	6
Minyeh Dunniyyeh	21
Naby Youshaa	1
Minieh	9
Bhannine	1
Sir El Dunniyyeh	5
Nimrine	1
Beit El Faqs	1
Btormaz	1
Bakh'oun	1
Others	1
Zahle	29
El Midane	1
El Barbara	1
Maallaqa	5
Karak Nouh	1
Aradi	1
Mar Elias	3
Ablah	1
Niha	1
Ksara	2
Wady Al Arayech	3
Qabb Elias	2
Riyag	3
Ali Al Nahry	2
Kfar Zabad	1
Others	2
Bint Jbeil	16
Bint Jbeil	2
Rmeich	3
Aita Al Chaab	1
Aita Al Jabal	2
Khirbet Selm	2
Deir Ntar	1
Kounine	1
Borj Qalawayh	1
Debl	3

Baalbek	57
Baalbek	7
Charawneh	6
Douris	2
Nahleh	2
Hadath Baalbek	2
Al Sahel	2
Al Ein	2
Arsal	2
Zboud	2
Hay Mathaneh	1
Younine	1
Deir El Ahmar	1
Bednayel	1
Qasr Nabba	1
Temnine Fawka	1
Temnine Tahta	1
Chmestar	4
Taraya	1
Sar'een Al Fawka	2
Talia	1
Hor Taala	1
Brital	1
Beit Mchaik	1
Others	12
Hermel	14
Hermel	6
Dora	1
Kouakh	1
Tal Al Far	1
Al Qasr	1
Ein Al Jdideh	2
Others	2
Nabatieh	34
El Tahta	2
El Fawka	2
Mazraat Kfar Joz	2
Zibdine	2
Habbouch	2
Ein Qana	1
Azza	1
Deir Al Zahrany	3
Jebshit	7
Mayfadoun	1
Abba	1
Ansar	1
Qseibeh	2
Qaaqa'iet El Jesr	1
Kfar Sir	1
Yuhmor	2
Others	3

Saida	65
Old Saida	24
Haret Saida	7
Miyeh w Miyeh	2
Ein Al Helwe	8
Majdelyoun	1
Abra	2
Ghazieh	2
Maghdoucheh	3
Zeita	1
Kharayeb	2
Kaouthariyet	1
Zrariah	1
Sarafand	4
Marwanieh	1
Kfar Melki	2
Others	4
Tyre	42
Tyre	13
Al Bass	1
Rashidieh	2
Borj AL Shemaly	2
Jouaiya	1
Barich	1
Qana	5
Borghleih	1
Bazourieh	1
Deir Kifa	1
Tayr Debba	1
Tayr Zebna	1
Rmadih	1
Chehour	1
Srifa	1
Chabriha	5
Qleileh	1
Mansoury	1
Bayada	1
Naqoura	1

Others	301
---------------	------------

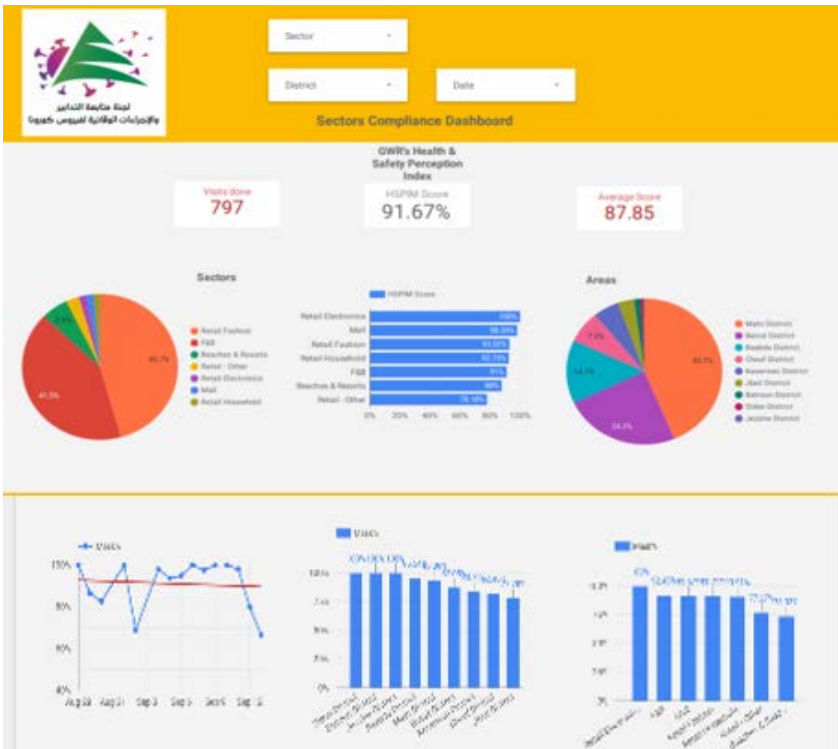
The Online platform to measure the level of risk of the spread of the new Corona virus



This interactive platform allows you to know the level of risk of spreading the kurna virus according to districts, based on the number of cases registered daily and the number of residents in each district. For more information on a daily basis, you can access the following link:

<https://bit.ly/DRM-RiskLevelInMunicipalities>

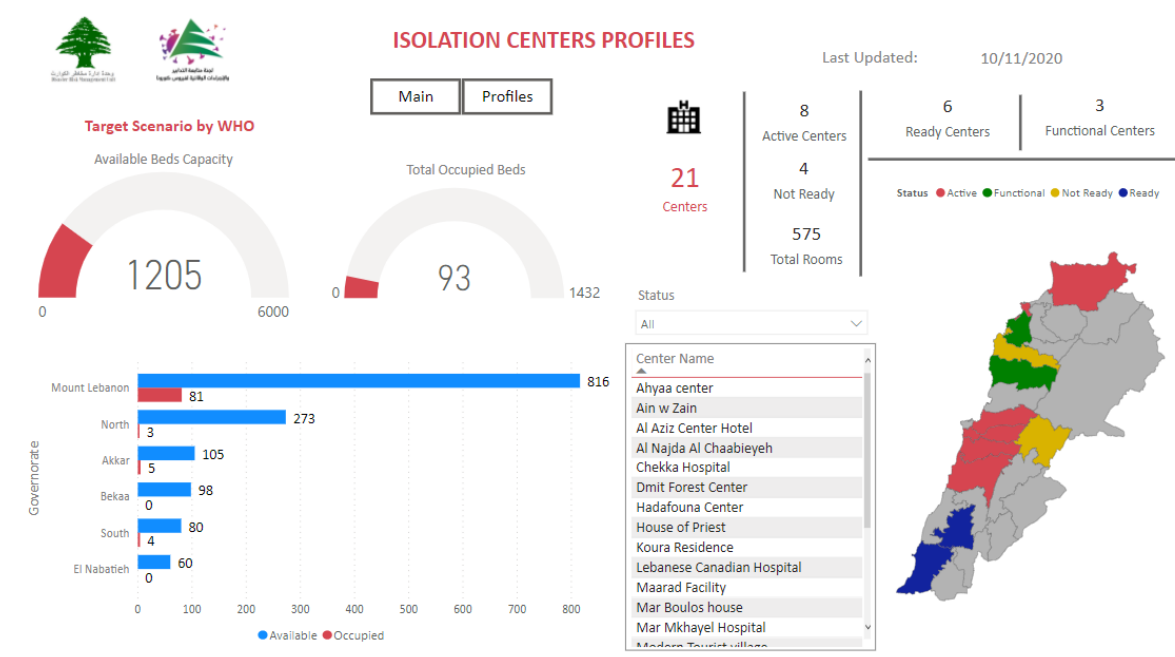
Online platform to track sector commitment in general mobilization procedures



Based on the recommendation issued by the National Committee for Follow-up of Preventive Measures and Measures to Confront the Coronavirus to open all sectors, provided that the general mobilization procedure (safe distance, muzzle, and hand sterilization) be applied, a special electronic platform was created that allows monitoring and measuring the percentage of commitment by various sectors on an ongoing basis.

The detailed results can be viewed directly at the following link <http://bit.ly/covidsectordata>

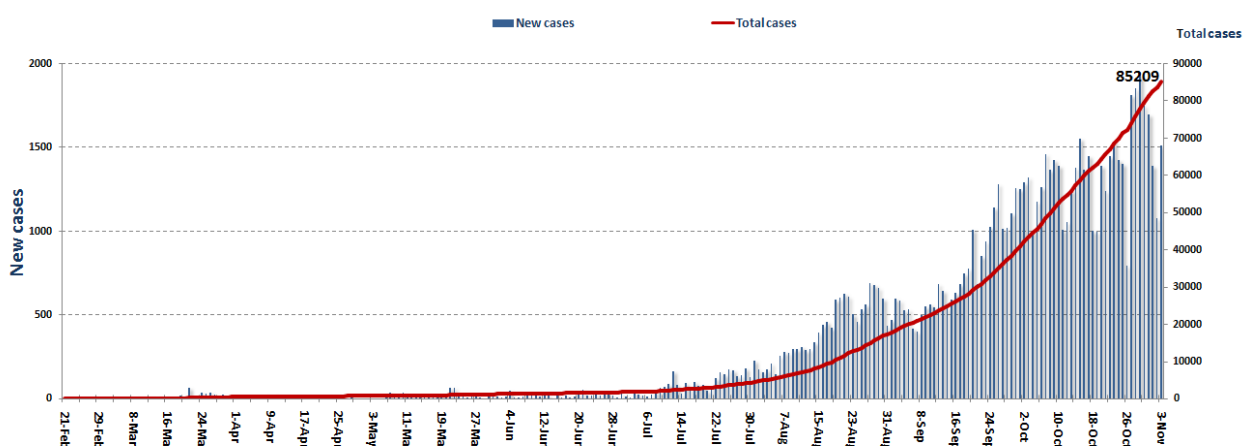
Occupancy rate of isolation centers for cases infected with Coronavirus



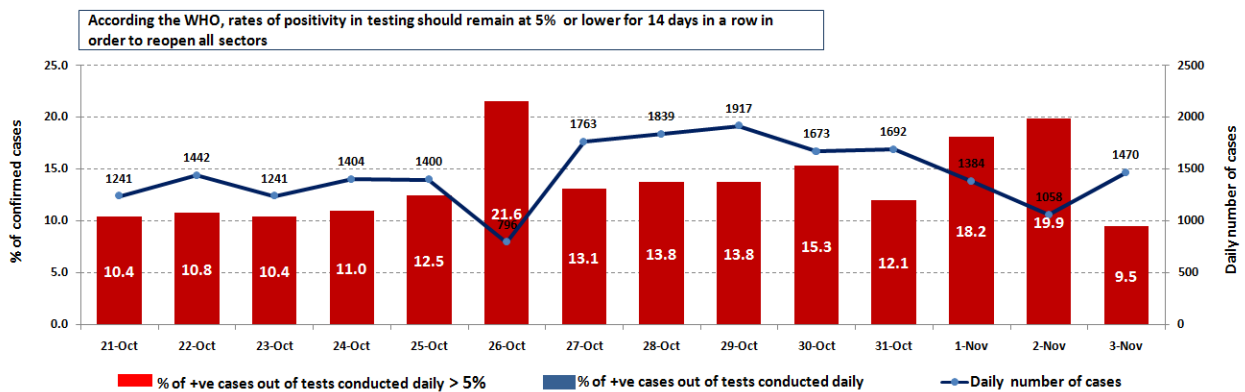
For more information about the isolation centers' distribution and the percentage of their occupancy, enter the following link: <http://bit.ly/DRM-IsolationCentersProfiles>

Note: These centers have been equipped in cooperation between the National Committee for Follow-up of Preventive Measures and Measures to Confront the Coronavirus and Governors and Municipalities, the United Nations Development Program, the World Health Organization, UNICEF, the Ministry of Public Health, the Syndicate of Nurses in Lebanon and the Syndicate of Specialists in Social Work.

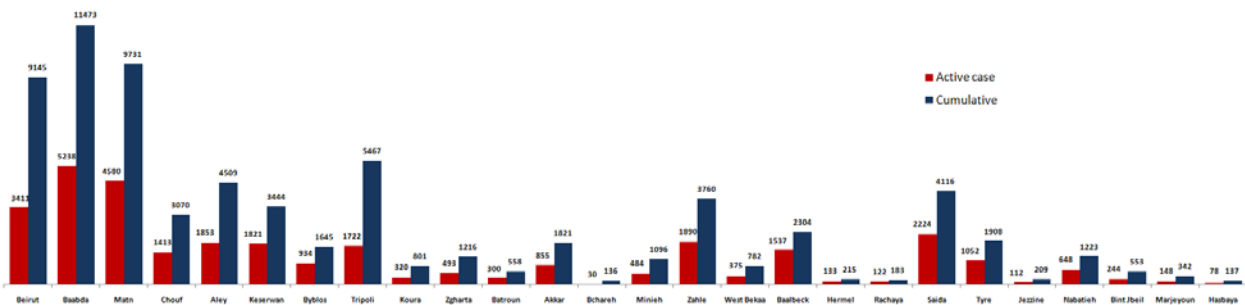
Cases per day



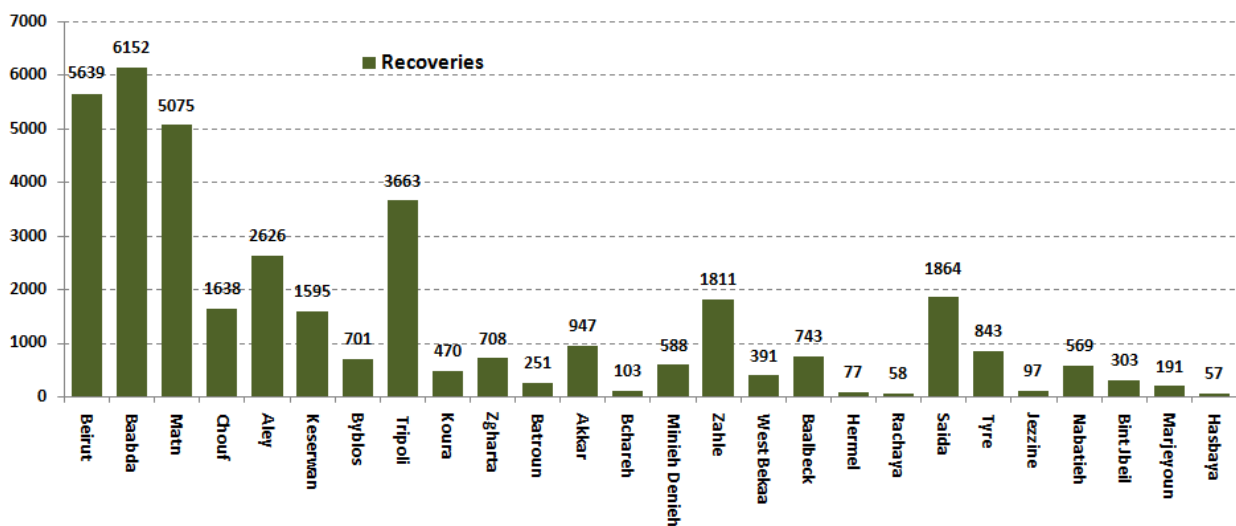
The percentage of positive cases out of the number of daily checks (21 Oct - 03 Nov 2020)



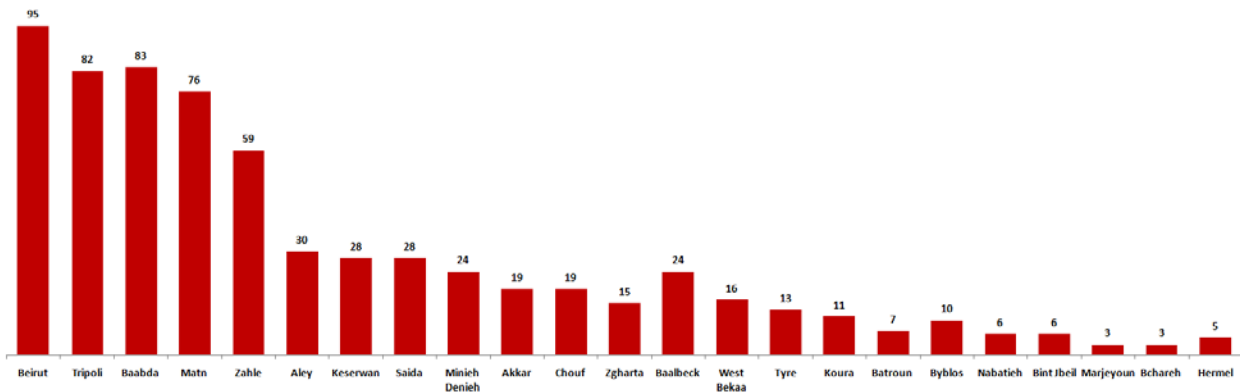
Distribution of Active Cases by Districts



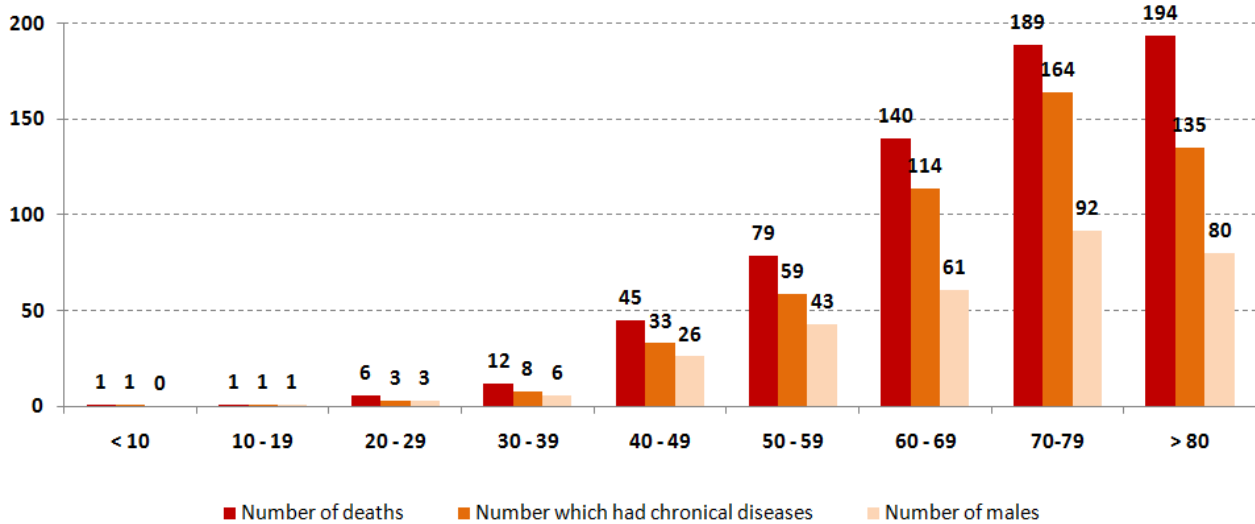
Recoveries



Distribution of deaths by Governorates



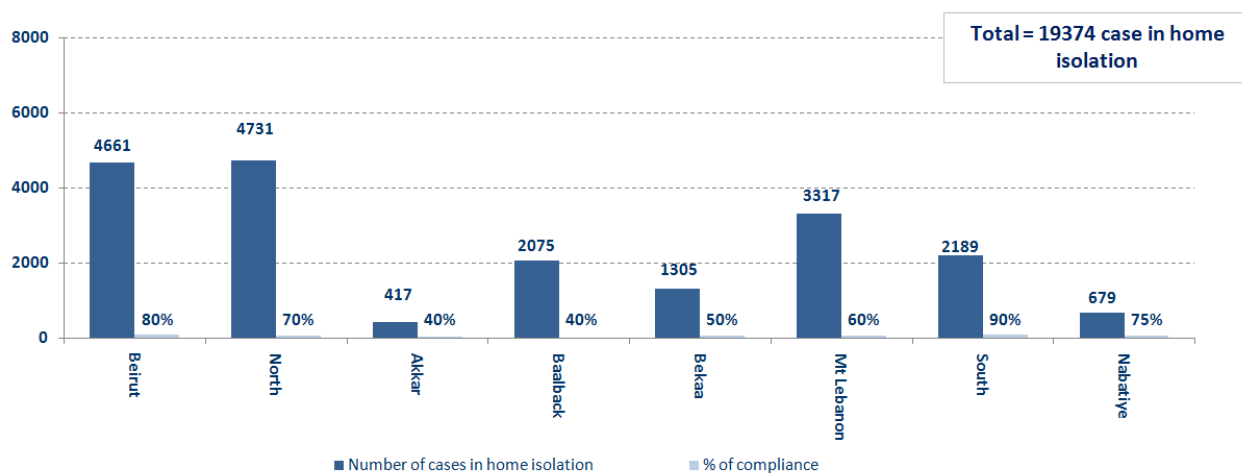
Distribution of deaths by Age



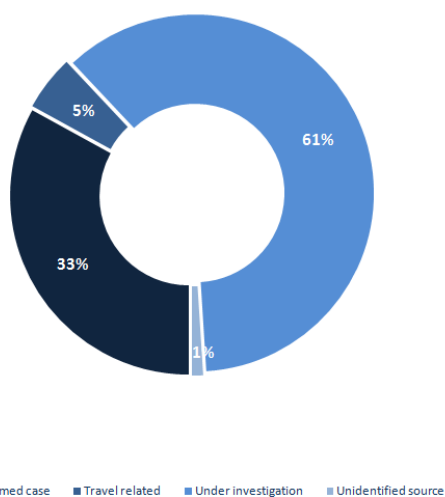
The distribution of the recorded deaths during the past 24 hours

Hospital	Residence	Gender	Age	Chronic
Elias Herawi Hospital	Zahleh	Female	85	Yes
Sanit George - Hadath	Baabda	Female	79	Yes
Baalbeck Gov Hospital	Baalbek	Male	40	No
Sanit George – Hadath	Matn	Male	74	Yes
Riyyak Hospital	Baalbek	Female	62	Yes
Ftough Kesrwen	Matn	Male	58	Yes
AUBMC	Beirut	Male	64	Yes
Rizk Hospital	Beirut	Female	60	Yes
Scare Coeur Hospital	Baabda	Female	87	Yes
Rizk Hospital	Matn	Female	39	Yes
Rizk Hospital	Matn	Male	67	Yes
Rizk Hospital	Matn	Female	86	Yes
Rizk Hospital	Matn	Male	53	Yes
Rizk Hospital	Matn	Male	69	Yes
Rizk Hospital	Baabda	Female	89	Yes

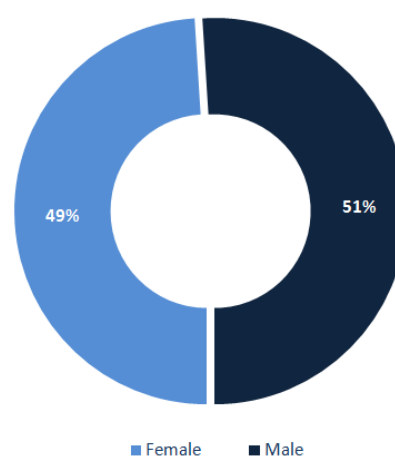
Number of individuals in home isolation and percentage of commitment to isolation



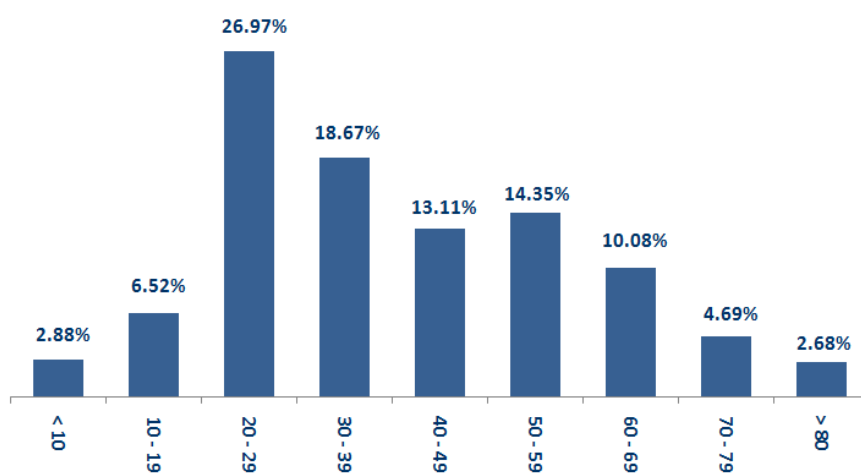
Exposure



Distribution according to gender



Distribution by age



Decisions and actions taken – 11/03/2020

Ministry of Public Health

- The Ministry of Public Health opened a special section for coronavirus patients at Al-Rayyan Hospital in Baalbek - The Ministry of Public Health reviewed the Deir Al-Ahmar Medical Center and its equipment and gave directions to open a department for treating corona patients

Arriving from	Company	Flight Number	Number of Positive Cases
N/A			
Total			0

Lebanese Red Cross

237,429	Number of PCR tests transferred to laboratories	54,203 (627 New)	Number of additional ambulance centers ready to respond	48	ambulance centers	7,489 (60 New)	cases transferred to hospitals
166	Number of volunteers trained to transfer PCR tests	1,498	Number of trained paramedics	8,828 (4 New)	total number of respondents	98,587	number of those benefiting from awareness *sessions
967	The number of university volunteers trained to follow up on prevention measures in companies and institutions	291	Number of university volunteers trained to conduct awareness sessions	550	total LRC volunteers for covid19	8,725 (4 New)	number of trained managers for isolation centers
4,568 (8 New)	Number of beneficiaries from educational electronic platforms COVID-19	261,661	Number of distributed equipment	1,252,074	total distriibuted posters, brochures, and flyers on covid19 prevention	763 (9 New)	number of rpisons that have been disinfected

General Directorate of Internal Security Forces

The number of seizure records during the past 24 hours					The total number of records since 03/08/2020	
Written records of violating institutions (absorptive capacity and preventive measures)				14		
Written records of persons violating the decision to wear a mask				64	Beirut	21,790
Written records of people violating the general mobilization decision (Aragil* and social distancing)				373	Mount Leb	22,358
Total				451	Beqaa	9,277
					North	7,647
Beirut	Mount Leb	Beqaa	North	South	South	8,321
21	281	81	24	44	Total	69,393

General Directorate of State Security

- Reporting the dispersal of a gathering of about 300 people inside a hotel for not adhering to the minimum safety conditions while filming a video clip
- Reporting the number of infections in the General Directorate of State Security with the Coronavirus to 64
- Notification of the percentage of compliance with the general mobilization decision in the governorates, which came as follows within the past 24 hours:

Beirut	South	North	Akkar	Beqaa	Nabateih	Baalbek Hermel	Mount Leb
50%	37%	41%	41%	75%	93%	15%	44%

General Directorate of General Security

- The report on the closure of the town of Hasbaya from 02/11/2020 to 09/11/2020 due to the increasing number of Coronavirus infections
- Reporting the closure of all official departments and institutions in Jezzine, with the exception of the National Social Security Fund
- Reporting the commitment of the municipalities to the decision of the Minister of Interior and Municipalities:

Municipalities that abided by the decision	Municipalities didn't abide by the decision
Mashghara, Meksa, Yatta, Qaraoun, Lala, Qaa al-Reem, Farzol, Niha, the towns within the boundaries of Choueifat, Amatour, Niha (Chouf), Jahiliya, Damour, the towns within Aley	Rayak, Kafr Zabad, Andaqat,

- Follow up the implementation of the required security and preventive measures at the airport, ports and border crossings.
- Reporting cases registered in the various districts and cases in home quarantine.

Ministry of Public Works and Transportation

Departing Flights		Arriving Flights	
Number of Flights	37	Number of Flights	33
Number of Departing Individuals	3,735	Number of Arrivals	2,922

Port	Entered			Left		
	Import	Direction	#	Export	Direction	#
Beirut	Containers	Mersin	1			
Tripoli	Containers	Egypt	1			
Jbeil				Blank	Gbraltar	1
Total			2			1

General announcements

Based on the recommendations of the Committee for the Follow-up of Preventive Measures and Procedures for Coronavirus No. 710 / AJAD on 10/30/2020, the Ministry of Interior and Municipalities issued Resolution No. 1358 on 11/1/2020 regarding the continued closure of some villages and towns due to the high number of infections. Corona virus in it. The decision stated the following:

- Determining the times of exit and entry to the streets and roads in all Lebanese regions covered and not covered by the closure decision
- The continued closure of bars, cabarets, and nightclubs, and the banning of public and private parties, social events and gatherings on the entire Lebanese territory, and permission for restaurants and cafes, provided that they do not exceed 50% of the absorption rate and adhere to health conditions (safe distance, not overcrowding)
- When necessary, citizens are obliged to wear a mask to cover the nose and mouth when traveling and to adhere to health conditions (safe distance, not overcrowding)
- It is exclusively for the Minister of Education and Higher Education to take the decision to open or close educational institutions and administrative units
- Determining the number of people traveling in public and private means of transport with the obligation to wear masks for the driver and passengers Other measures:
 - Full closure of the towns mentioned in the decision starting from 5:00 a.m. on Monday 11/2/2020 until 5:00 a.m. on Monday 9/11/2020
 - To suspend work in all official and private institutions located within the scope of these villages and towns, with the exception of institutions and departments of the Ministry of Education and Higher Education, according to what the Minister deems appropriate.
 - Coordination with the religious authorities in terms of closing places of worship and canceling religious events
- Excluding some sectors and employees from the decision, with the necessity to keep the job card in order to present it when necessary Assigning governors to:
 - Determine the municipal zone in the received towns Take the necessary measures to implement this decision and request the support of the General Directorate of Internal Security, when necessary
 - Emphasize on citizens the need to adhere to public safety procedures and to adhere to wearing a mask when traveling in case of necessity
 - Assigning the district attorneys to instruct the mayors to review the lists of positive cases on the IMPACT platform daily and coordinate with the judiciary doctor and the Lebanese Red Cross to take the appropriate decision
- Assigning the General Directorate of Internal Security Forces to strictly enforce this decision and suppress violations of public mobilization decisions, and to organize arrest records against violators.

Note: The decisions can be found at www.drm.pcm.gov.lb

Examples of lack of adherence to safety measures

Failure of some municipalities to abide by the Ministry of Interior and Municipalities Decision No. 1025/2020 related to the closure of towns that have a high risk of the spread of the epidemic.

- Demand gatherings and demonstrations.
- Failure to comply with the preventive measures and procedures required in several stores and markets (putting on a muzzle or face mask, sterilizing hands, maintaining a safe distance).
- Non-compliance with the 50% occupancy rate in several restaurants and amusement game centers.
- Gatherings for social events.
- Failure of those in contact with confirmed cases to adhere to home isolation procedures until the results of the laboratory tests are issued.

If you feel any symptoms, call directly the hotline of the Ministry of Public Health: 1214 or 01/594459

Laboratories that did not comply with the procedures approved by the MoPH About the information required to be recorded for infected cases within the past 24 hours

Laboratories that did not specify the Governorate	
Laboratory/Hospitals	Cases
Laboratoire Inovie / Fayyadie	132
Hadi Laboratory/ Haret Hreik	83
Beirut International Airport	9
Hospital Sacre Coeur	3
Hospital Bahman	2
Rafic Hariri University hospital	1
Mashrek Medical Diagnostic Center MDC	1

Number of positive cases without specifying the place of residence	
Laboratory/Hospitals	Cases
Laboratoire Inovie / Fayyadie	134
Hadi Laboratory/ Haret Hreik	92
Beirut International Airport	9
Hospital Bahman	7
Hospital Mazloun	5
Hospital Sacre Coeur	3
Hospital Mont liban	2
Hospital Ain wa Zain	2
Laboratoire Akiki et Boulos	2
Mashrek Medical Diagnostic Center MDC	2
Rafic Hariri University hospital	1
Nabatieh Nabih Berry Gov Hospital	1
Hospital Centre Hospitalier du Nord	1

Number of positive cases without a phone number	
Laboratory/Hospitals	Cases
Hadi Laboratory/ Haret Hreik	16
Beirut International Airport	2

A list of the laboratories accredited by the MoPH to conduct PCR tests

المختبرات الحكومية المؤهلة لإجراء التشخيص المخبري لفيروس كورونا بطريقة الـ RT-PCR

الموقع	المختبر
بيروت	مستشفى رفيق الحريري الجامعي RHUH
حلبا	مستشفى حلبا الحكومي
طرابلس	مستشفى طرابلس الحكومي
البترون	مستشفى البترون الحكومي
كسروان	مستشفى فتوح كسروان الحكومي (البوار)
البلقاء	مستشفى نبيه يزّي الحكومي الجامعي
تبنين	مستشفى تبنين الحكومي
بنت جبيل	مستشفى بنت جبيل الحكومي
بعلبك	مستشفى بعلبك الحكومي
زحلة	مستشفى الرئيس الياقوت الهراوي الحكومي

مختبرات المستشفيات العسكرية

بيروت	المستشفى العسكري المركزي في بيروت Hôpital Militaire Central
-------	---

المختبرات المؤهلة لأخذ عينات "المسحات الأنفية" بطريقة Drive- thru

بيروت	مختبر ميديكال دياغنوستيك تريتمانت سنتر (الحمراء) Medical Diagnostic Treatment Center (MDTC)
بيروت	مختبر ميد لاب MedLab SAL CIC ALS (الحمراء - الجبلين)
بيروت	مختبرات عيتاني Itani Medical Laboratories (المزرعة)
الأسرفية	مختبر أ ب سي ABC Laboratories
التياج	مختبرات معوض الطبية Mouawad Medical Laboratory
التياج	مختبرات التياج (د. فؤاد ربحان) Riham Medical Center
المنصورة	مختبر إكسبرت لاب Expert Lab
بعلبك	مختبر لايف لاب Life LAB
رياق	مستشفى الرياق Riyak Hospital

المختبرات الخاصة المؤهلة لإجراء التشخيص المخبري لفيروس كورونا بطريقة RT-PCR

المختبر	الموقع
AUBMC مستشفى الجامعة الأميركية بيروت	بيروت
Hotel-Dieu de France (HDF) مستشفى أوتيل ديو الجامعي	بيروت
مختبرات رندولف ميريو (الجامعة اليسوعية – المتحف)	بيروت
Laboratoire Rodolphe Mérieux (Université Saint-Joseph)	بيروت
Saint-George Hospital - UMC مستشفى القديس جاورجيوس الجامعي	بيروت
Makassed General Hospital مستشفى المقاصد	بيروت
LAU Medical Center - Rizk Hospital مستشفى رزق الجامعي	بيروت
Hôpital Libanais Geitawi - CHU مستشفى اللبناني الجعيتاوي الجامعي	بيروت
Hôpital Notre-Dame du Rosaire مستشفى الوردية	بيروت
Doctor 's Center مختبر مركز الأطباء	بيروت
Fontana Laboratories مختبر فونتانا (الحمرا)	بيروت
مختبر الأمن العام (العناتية)	بيروت
Laboratoire Jabre-Ghorra مختبرات جبر وغرة	بيروت
Saint Marc Medical & Diagnostic Center مختبر السان مارك	بيروت
Laboratoire Moderne (Modern Lab- Berjaoui) المختبرات الحديثة	الغبري
Sahel General Hospital (SGH) مستشفى الساحل	الغبري
مستشفى الزعراء الجامعي	الغبري
Al Zahraa Hospital - UMC مستشفى الرسول الأعظم	برج الزراجة
مستشفى بهمن	حارة حريك
Al Rassoul Al Aazam Hospital Bahman Hospital	حارة حريك
مختبر ناتيونال دياغنوستك سرفيس كومباني	حارة حريك
National Diagnostic Services Company (NDSC)	حارة حريك
Medical Diagnostic Center مختبر الدكتور محمود عثمان - مركز التحاليل الطبية	الزبدية
American Diagnostic Center (ADC) مختبر أميريك دياغنوستك سنتر	الجناب
Mount Lebanon Hospital مستشفى جبل لبنان	بعنا
Hôpital Saint-George – Hadath مستشفى السان جورج الحدث	بعنا
Al Hadi Laboratory مختبر الهادي	بعنا
INOIE-Liban مختبر	بعنا

Hôpital du Sacré- Coeur مستشفى قلب يسوع	الحازمية
Clinigene مختبر كلينيجان	الحازمية
Hôpital Dr.Samir Serhal مستشفى سرحال	المتن
Transmedical for Life مختبر ترانسيميديكال فور ليف	المتن
Haroun Hospital مستشفى هارون	الزلفا
Bellevue Medical Center (BMC) مستشفى بلغو	المنصورية
Hôpital Albert Haykal مستشفى هيكال	الكورة
Centre Hospitalier du Nord (CHN) مركز الشمال الإستشفائي	زغرتا
Mazloum Hospital مستشفى المظلوم	طرابلس
Al Mounla Hospital مستشفى المنلا	طرابلس
Nini Hospital مستشفى النيني	طرابلس
مختبر ميكروبيولوجيا الصحة والبيئة LMSE - المعهد العالي للدكتوراه، الجامعة اللبنانية	طرابلس
CHU - Notre-Dame des Secours مستشفى سيدة المعونات الجامعي	جبل
Lab Akiki & Boulos مختبر عقيقي وبولس	جبل
Centre Médical Wakim مختبر والكم	جونية
Ain Wazein Hospital مستشفى عين وزين	الشوف
Hammoud Hospital UMC مستشفى حمود الجامعي	صيدا
Al Karim Medical Laboratory (KML) مختبر الكريم	صيدا
Sheikh Ragheb Harb Hospital مستشفى الشيخ راجب حرب	البيتمنة
Sabbah Diagnostic Center (SDC) مختبر الصباح	البيطية
Jabal Amel Hospital مستشفى جبل عامل	صور
Mashrek Diagnostic Center (MDC) مختبر المشرق	صور
Dar Al Amal University Hospital مستشفى دار الأمل الجامعي	بعلبك
Khoury General Hospital مستشفى خوري	زحلة
Medical Care Center (MCC) مختبر ميديكال كير سنتر	زحلة